

For Research Use Only

HER2/ErbB2 Polyclonal antibody

Catalog Number: 51105-1-AP 1 Publications



Basic Information

Catalog Number: 51105-1-AP	GenBank Accession Number: BC167147	Purification Method: Antigen affinity purification
Size: 150ul , Concentration: 300 ug/ml by Nanodrop and 160 ug/ml by Bradford method using BSA as the standard;	GeneID (NCBI): 2064	Recommended Dilutions: WB: 1:500-1:2000
Source: Rabbit	UNIPROT ID: P04626	IP: 0.5-4.0 ug for 1.0-3.0 mg of total protein lysate
Isotype: IgG	Full Name: v-erb-b2 erythroblastic leukemia viral oncogene homolog 2, neuro/glioblastoma derived oncogene homolog (avian)	IHC: 1:20-1:200
	Calculated MW: 185 kDa	IF/ICC: 1:20-1:200
	Observed MW: 185 kDa	

Applications

Tested Applications: WB, IHC, IF/ICC, IP, ELISA	Positive Controls:
Cited Applications: IF	WB : HeLa cells, MCF-7 cells
Species Specificity: human	IP : SK-BR-3 cells,
Cited Species: human	IHC : human breast cancer tissue, Breast Cancer slides
	IF/ICC : HeLa cells,
Note-IHC: suggested antigen retrieval with TE buffer pH 9.0; (*) Alternatively, antigen retrieval may be performed with citrate buffer pH 6.0	

Background Information

HER2, also known as ErbB2 and Neu, is a 185-kDa transmembrane glycoprotein that is a member of the EGF receptor family of receptor tyrosine kinases. It has no ligand binding domain of its own. However, it does bind tightly to other ligand-bound EGF receptor family members to form a heterodimer, stabilizing ligand binding and enhancing kinase-mediated activation of downstream signalling pathways, such as those involving mitogen-activated protein kinase and phosphatidylinositol-3 kinase. Amplification and/or overexpression of HER2 have been reported in numerous cancers, including breast and ovarian tumors. HER2 is a therapeutic target for the treatment of breast cancer and other carcinomas.

Notable Publications

Author	Pubmed ID	Journal	Application
Yu Sun	40001666	Bioengineering (Basel)	IF

Storage

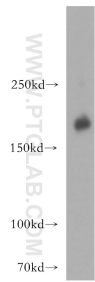
Storage:
Store at -20°C. Stable for one year after shipment.
Storage Buffer:
PBS with 0.02% sodium azide and 50% glycerol, pH7.3
Aliquoting is unnecessary for -20°C storage

*** 20ul sizes contain 0.1% BSA

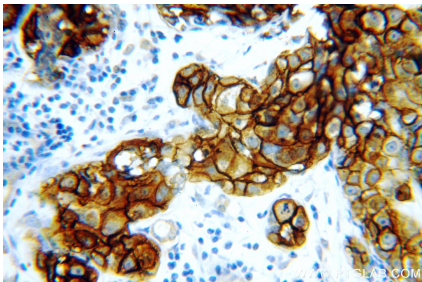
For technical support and original validation data for this product please contact:
T: 1 (888) 4PTGLAB (1-888-478-4522) (toll free in USA), or 1(312) 455-8498 (outside USA)
E: proteintech@ptglab.com
W: ptglab.com

This product is exclusively available under Proteintech Group brand and is not available to purchase from any other manufacturer.

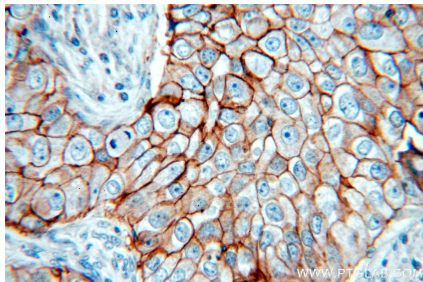
Selected Validation Data



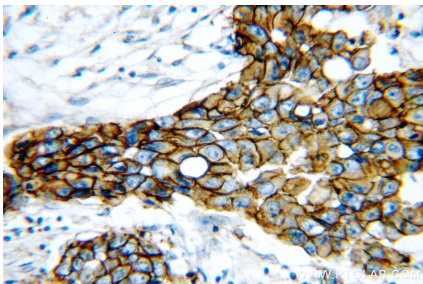
HeLa cells were subjected to SDS PAGE followed by western blot with 51105-1-AP (HER2/ErbB2 antibody) at dilution of 1:300 incubated at room temperature for 1.5 hours.



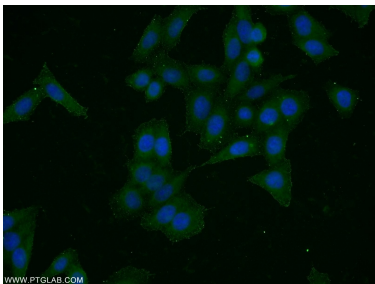
Immunohistochemical analysis of paraffin-embedded human breast cancer using 51105-1-AP (HER2/ErbB2 antibody) at dilution of 1:50 (under 40x lens).



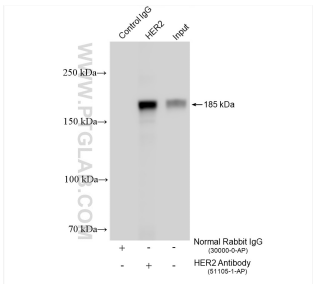
Immunohistochemical analysis of paraffin-embedded human breast cancer using 51105-1-AP (HER2/ErbB2 antibody) at dilution of 1:50 (under 40x lens).



Immunohistochemical analysis of paraffin-embedded human breast cancer using 51105-1-AP (HER2/ErbB2 antibody) at dilution of 1:50 (under 40x lens).



Immunofluorescent analysis of HeLa cells using 51105-1-AP (HER2/ErbB2 antibody) at dilution of 1:50 and Alexa Fluor 488-conjugated Goat Anti-Rabbit IgG(H+L).



IP result of anti-HER2/ErbB2 (IP:51105-1-AP, 4ug; Detection:51105-1-AP 1:500) with SK-BR-3 cells lysate 1280 ug.