

For Research Use Only

KLHL14 Polyclonal antibody

Catalog Number: 51131-1-AP



Basic Information

Catalog Number:

51131-1-AP

Size:

150ul , Concentration: 150 µg/ml by Nanodrop and 150 µg/ml by Bradford method using BSA as the standard;

Source:

Rabbit

Isotype:

IgG

GenBank Accession Number:

BC021267

GeneID (NCBI):

57565

UNIPROT ID:

Q9P2G3

Full Name:

kelch-like 14 (Drosophila)

Calculated MW:

44 kDa, 71 kDa

Observed MW:

55 kDa, 70 kDa

Purification Method:

Antigen affinity purification

Recommended Dilutions:

WB 1:500-1:2000

IHC 1:20-1:200

Applications

Tested Applications:

WB, IHC, ELISA

Species Specificity:

human

Note-IHC: suggested antigen retrieval with TE buffer pH 9.0; (*) Alternatively, antigen retrieval may be performed with citrate buffer pH 6.0

Positive Controls:

WB : HEK-293 cells,

IHC : human ovary tumor tissue,

Storage

Storage:

Store at -20°C.

Storage Buffer:

PBS with 0.02% sodium azide and 50% glycerol pH 7.3.

Aliquoting is unnecessary for -20°C storage

*** 20ul sizes contain 0.1% BSA

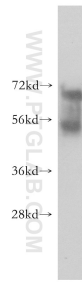
For technical support and original validation data for this product please contact:

T: 1 (888) 4PTGLAB (1-888-478-4522) (toll free in USA), or 1(312) 455-8498 (outside USA)

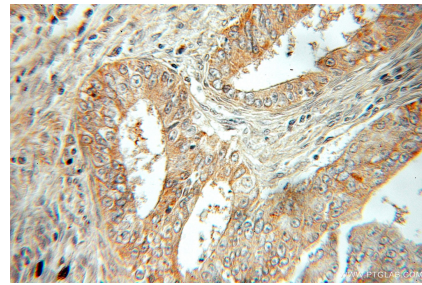
E: proteintech@ptglab.com
W: ptglab.com

This product is exclusively available under Proteintech Group brand and is not available to purchase from any other manufacturer.

Selected Validation Data



HEK-293 cells were subjected to SDS PAGE followed by western blot with 51131-1-AP (KLHL14 antibody) at dilution of 1:0 incubated at room temperature for 1.5 hours.



Immunohistochemical analysis of paraffin-embedded human ovary tumor using 51131-1-AP (KLHL14 antibody) at dilution of 1:50 (under 10x lens).