

For Research Use Only

# PAK1 Polyclonal antibody

Catalog Number: 51137-1-AP

Featured Product

3 Publications



## Basic Information

### Catalog Number:

51137-1-AP

### Size:

150ul, Concentration: 450 ug/ml by Nanodrop;

### Source:

Rabbit

### Isotype:

IgG

### GenBank Accession Number:

BC109299

### GeneID (NCBI):

5058

### UNIPROT ID:

Q13153

### Full Name:

p21 protein (Cdc42/Rac)-activated kinase 1

### Calculated MW:

553 aa, 62 kDa

### Observed MW:

61-65 kDa

### Purification Method:

Antigen affinity purification

### Recommended Dilutions:

WB 1:500-1:2000

IHC 1:20-1:200

IF/ICC 1:200-1:800

## Applications

### Tested Applications:

WB, IHC, IF/ICC, ELISA

### Cited Applications:

WB, IHC

### Species Specificity:

human, mouse, rat

### Cited Species:

human, mouse

**Note-IHC: suggested antigen retrieval with TE buffer pH 9.0; (\*) Alternatively, antigen retrieval may be performed with citrate buffer pH 6.0**

### Positive Controls:

WB : A431 cells, K-562 cells, HEK-293 cells, C6 cells, NIH/3T3 cells, PC-12 cells

IHC : human stomach cancer tissue,

IF/ICC : HeLa cells,

## Background Information

The p21-Activated kinase 1 (PAK1), a member of serine-threonine kinases family, was initially identified as an interactor of the Rho GTPases RAC1 and CDC42, which affect a wide range of processes associated with cell motility, survival, metabolism, cell cycle, proliferation, transformation, stress, inflammation, and gene expression (PMID: 32863957). PAK1 is over-expressed in various malignancies such as ovarian, breast, lung, and bladder cancers, and is closely associated with tumor invasion.

## Notable Publications

Author	Pubmed ID	Journal	Application
Caihong Wang	39467462	J Environ Manage	WB
Janet P Raja Xavier	38704457	Commun Biol	WB
Jung-Soo Pyo	37801909	Pathol Res Pract	IHC

## Storage

### Storage:

Store at -20°C. Stable for one year after shipment.

### Storage Buffer:

PBS with 0.02% sodium azide and 50% glycerol pH 7.3.

Aliquoting is unnecessary for -20°C storage

\*\*\* 20ul sizes contain 0.1% BSA

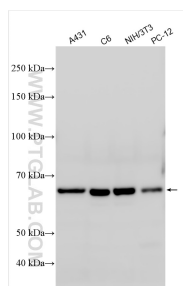
For technical support and original validation data for this product please contact:

T: 1 (888) 4PTGLAB (1-888-478-4522) (toll free in USA), or 1(312) 455-8498 (outside USA)

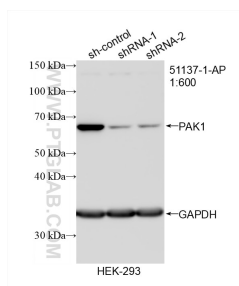
E: proteintech@ptglab.com  
W: ptglab.com

This product is exclusively available under Proteintech Group brand and is not available to purchase from any other manufacturer.

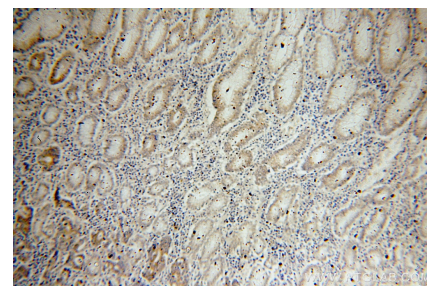
## Selected Validation Data



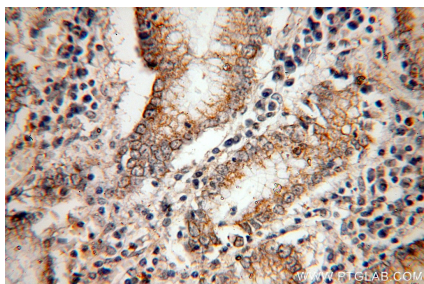
Various lysates were subjected to SDS PAGE followed by western blot with 51137-1-AP (PAK1 antibody) at dilution of 1:1000 incubated at room temperature for 1.5 hours.



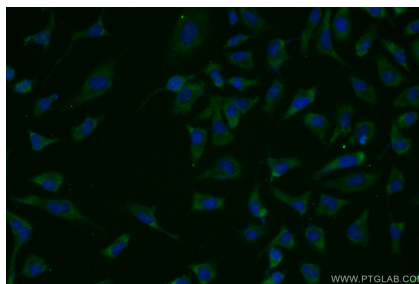
WB result of PAK1 antibody (51137-1-AP; 1:600; incubated at room temperature for 1.5 hours) with sh-Control and sh-PAK1 transfected HEK-293 cells.



Immunohistochemical analysis of paraffin-embedded human stomach cancer using 51137-1-AP (PAK1 antibody) at dilution of 1:100 (under 10x lens).



Immunohistochemical analysis of paraffin-embedded human stomach cancer using 51137-1-AP (PAK1 antibody) at dilution of 1:100 (under 40x lens).



Immunofluorescent analysis of (-20°C Ethanol) fixed HeLa cells using PAK1 antibody (51137-1-AP) at dilution of 1:400 and CoraLite® 488-Conjugated Goat Anti-Rabbit IgG(H+L) (SA00013-2).