

For Research Use Only

MAP2K4 Polyclonal antibody

Catalog Number: 51142-1-AP



Basic Information

Catalog Number:

51142-1-AP

Size:

150ul , Concentration: 350 ug/ml by Nanodrop and 233 ug/ml by Bradford method using BSA as the standard;

Source:

Rabbit

Isotype:

IgG

GenBank Accession Number:

BC036032

GeneID (NCBI):

6416

UNIPROT ID:

P45985

Full Name:

mitogen-activated protein kinase kinase 4

Calculated MW:

399 aa, 44 kDa

Observed MW:

44-50 kDa

Purification Method:

Antigen affinity purification

Recommended Dilutions:

WB 1:500-1:1000

IHC 1:20-1:200

Applications

Tested Applications:

WB, IHC, ELISA

Species Specificity:

human, mouse

Note-IHC: suggested antigen retrieval with TE buffer pH 9.0; (*) Alternatively, antigen retrieval may be performed with citrate buffer pH 6.0

Positive Controls:

WB : mouse brain tissue, HeLa cells

IHC : human breast cancer tissue,

Storage

Storage:

Store at -20°C. Stable for one year after shipment.

Storage Buffer:

PBS with 0.02% sodium azide and 50% glycerol pH 7.3.

Aliquoting is unnecessary for -20°C storage

*** 20ul sizes contain 0.1% BSA

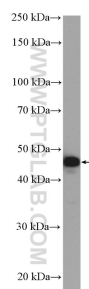
For technical support and original validation data for this product please contact:

T: 1 (888) 4PTGLAB (1-888-478-4522) (toll free in USA), or 1(312) 455-8498 (outside USA)

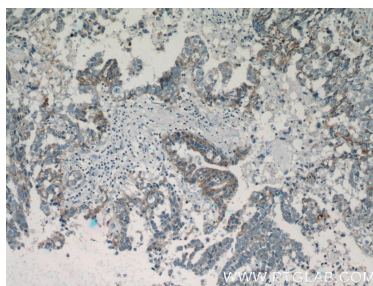
E: proteintech@ptglab.com
W: ptglab.com

This product is exclusively available under Proteintech Group brand and is not available to purchase from any other manufacturer.

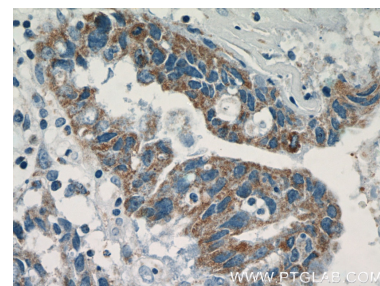
Selected Validation Data



mouse brain tissue were subjected to SDS PAGE followed by western blot with 51142-1-AP (MAP2K4 antibody) at dilution of 1:600 incubated at room temperature for 1.5 hours.



Immunohistochemical analysis of paraffin-embedded human breast cancer tissue slide using 51142-1-AP (MAP2K4 antibody at dilution of 1:50) (under 10x lens).



Immunohistochemical analysis of paraffin-embedded human breast cancer tissue slide using 51142-1-AP (MAP2K4 antibody at dilution of 1:50) (under 40x lens).