

For Research Use Only

# SMAD4 Polyclonal antibody

Catalog Number: 51144-1-AP

Featured Product

3 Publications



## Basic Information

### Catalog Number:

51144-1-AP

### Size:

150ul, Concentration: 450 ug/ml by Nanodrop and 333 ug/ml by Bradford method using BSA as the standard;

### Source:

Rabbit

### Isotype:

IgG

### GenBank Accession Number:

BC002379

### GeneID (NCBI):

4089

### UNIPROT ID:

Q13485

### Full Name:

SMAD family member 4

### Calculated MW:

60 kDa

### Observed MW:

58 kDa

### Purification Method:

Antigen affinity purification

### Recommended Dilutions:

WB 1:500-1:1000

IHC 1:20-1:200

## Applications

### Tested Applications:

WB, IHC, ELISA

### Cited Applications:

WB

### Species Specificity:

human, mouse, rat

### Cited Species:

rat

### Positive Controls:

WB : HeLa cells, HepG2 cells

IHC : human placenta tissue, human heart tissue

**Note-IHC: suggested antigen retrieval with TE buffer pH 9.0; (\*) Alternatively, antigen retrieval may be performed with citrate buffer pH 6.0**

## Background Information

Mammalian homologs of the Drosophila Mad gene include Smad1, Smad2, Smad3, Smad4 (DPC4), Smad5, Smad6, Smad7 and Smad8. Smad1 and Smad5 are effectors of BMP2 and BMP4 function while Smad2 and Smad3 are involved in TGF and activin-mediated growth modulation. Smad4 has been shown to mediate all of the above activities through interaction with various Smad family members. Smad6 and Smad7 regulate the response to activin/ TGF signaling by interfering with TGF-mediated phosphorylation of other Smad family members. This antibody is a rabbit polyclonal antibody raised against a peptide (25-43aa) mapping within human SMAD4. It is specific to SMAD4.

## Notable Publications

Author	Pubmed ID	Journal	Application
Ruichen Wang	33365066	Exp Ther Med	WB
Bianqiao Cheng	30651793	Exp Ther Med	WB
Qian Huang	35600274	Open Life Sci	WB

## Storage

### Storage:

Store at -20°C.

### Storage Buffer:

PBS with 0.02% sodium azide and 50% glycerol pH 7.3.

Aliquoting is unnecessary for -20°C storage

\*\*\* 20ul sizes contain 0.1% BSA

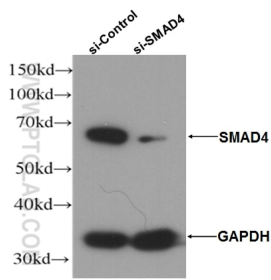
For technical support and original validation data for this product please contact:

T: 1 (888) 4PTGLAB (1-888-478-4522) (toll free in USA), or 1(312) 455-8498 (outside USA)

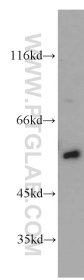
E: [proteintech@ptglab.com](mailto:proteintech@ptglab.com)  
W: [ptglab.com](http://ptglab.com)

This product is exclusively available under Proteintech Group brand and is not available to purchase from any other manufacturer.

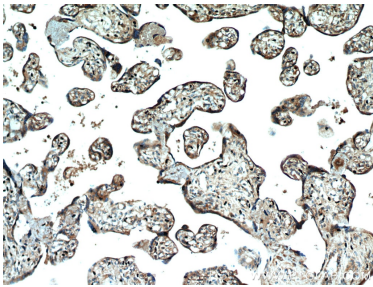
Selected Validation Data



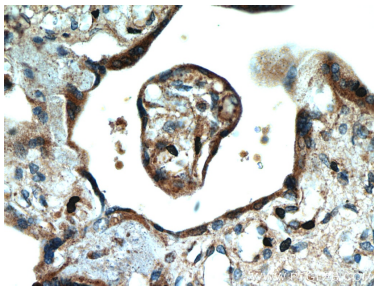
WB results of SMAD4 antibody (51144-1-AP, 1:1000) with si-Control and si-SMAD4 transfected HepG2 cells.



HeLa cells were subjected to SDS PAGE followed by western blot with 51144-1-AP (SMAD4 antibody) at dilution of 1:300 incubated at room temperature for 1.5 hours.



Immunohistochemical analysis of paraffin-embedded human placenta using 51144-1-AP (SMAD4 antibody) at dilution of 1:50 (under 10x lens).



Immunohistochemical analysis of paraffin-embedded human placenta using 51144-1-AP (SMAD4 antibody) at dilution of 1:50 (under 40x lens).