

For Research Use Only

LIN41 Polyclonal antibody

Catalog Number: 55003-1-AP

3 Publications



Basic Information

Catalog Number:

55003-1-AP

Size:

150ul, Concentration: 350 µg/ml by Nanodrop and 187 µg/ml by Bradford method using BSA as the standard;

Source:

Rabbit

Isotype:

IgG

GenBank Accession Number:

NM_001039111

GeneID (NCBI):

131405

UNIPROT ID:

Q2Q1W2

Full Name:

tripartite motif-containing 71

Calculated MW:

93 kDa

Observed MW:

93 kDa

Purification Method:

Antigen affinity purification

Recommended Dilutions:

WB 1:500-1:1000

IHC 1:20-1:200

Applications

Tested Applications:

WB, IHC, ELISA

Cited Applications:

WB, IHC

Species Specificity:

human, mouse, rat

Cited Species:

human, mouse

Note-IHC: suggested antigen retrieval with TE buffer pH 9.0; (*) Alternatively, antigen retrieval may be performed with citrate buffer pH 6.0

Positive Controls:

WB : mouse kidney tissue, DU 145 cells, NIH/3T3 cells

IHC : human testis tissue,

Background Information

TRIM71, also named as LIN41, belongs to the TRIM/RBCC family. It may be involved in controlling the timing of organ formation during development. The antibody is specific to TRIM71.

Notable Publications

Author	Pubmed ID	Journal	Application
Jingsheng Yuan	36244648	Cell Mol Gastroenterol Hepatol	WB
Daniel J Foster	32816599	Cell Cycle	WB
Lilan Fan	36920046	Mol Carcinog	IHC

Storage

Storage:

Store at -20°C. Stable for one year after shipment.

Storage Buffer:

0.1M NaHCO₃, 0.1M glycine, 0.02% sodium azide and 50% glycerol pH 7.3.

Aliquoting is unnecessary for -20°C storage

*** 20ul sizes contain 0.1% BSA

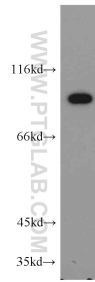
For technical support and original validation data for this product please contact:

T: 1 (888) 4PTGLAB (1-888-478-4522) (toll free in USA), or 1(312) 455-8498 (outside USA)

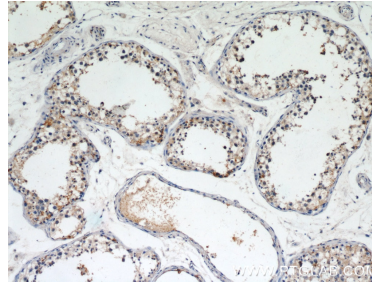
E: proteintech@ptglab.com
W: ptglab.com

This product is exclusively available under Proteintech Group brand and is not available to purchase from any other manufacturer.

Selected Validation Data



mouse kidney tissue were subjected to SDS PAGE followed by western blot with 55003-1-AP (LIN41 antibody) at dilution of 1:300 incubated at room temperature for 1.5 hours.



Immunohistochemical analysis of paraffin-embedded human testis using 55003-1-AP (LIN41 antibody) at dilution of 1:50 (under 10x lens).