

For Research Use Only

Cyclin B1 Polyclonal antibody, PBS Only

Catalog Number: 55004-1-PBS

Featured Product



Basic Information

Catalog Number:

55004-1-PBS

Size:

100ug, Concentration: 1 mg/ml by Nanodrop;

Source:

Rabbit

Isotype:

IgG

GenBank Accession Number:

NM_031966

GeneID (NCBI):

891

UNIPROT ID:

P14635

Full Name:

cyclin B1

Calculated MW:

48 kDa

Observed MW:

55-60 kDa

Purification Method:

Antigen affinity purification

Applications

Tested Applications:

WB, IF/ICC, FC (Intra), IP, Indirect ELISA

Species Specificity:

human, mouse

Background Information

Cyclin B1 is a regulatory protein involved in mitosis. The gene product complexes with p34(cdc2) to form the maturation-promoting factor (MPF). Two alternative transcripts have been found, a constitutively expressed transcript and a cell cycle-regulated transcript, that is expressed predominantly during G2/M phase of the cell cycle. The different transcripts result from the use of alternate transcription initiation sites. The antibody is specific to CCNB1. We got a 55-60 kDa band in western blotting maybe due to phosphorylation.

Storage

Storage:

Store at -80°C.

Storage Buffer:

PBS only, pH7.3

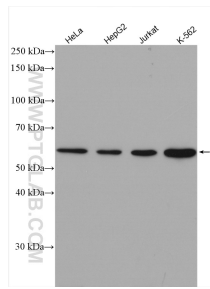
For technical support and original validation data for this product please contact:

T: 1 (888) 4PTGLAB (1-888-478-4522) (toll free in USA), or 1(312) 455-8498 (outside USA)

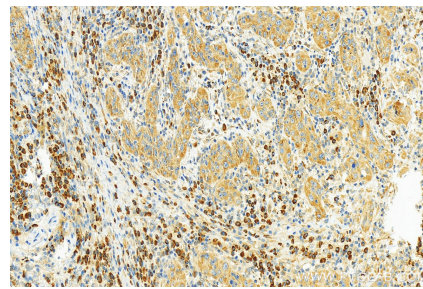
E: proteintech@ptglab.com
W: ptglab.com

This product is exclusively available under Proteintech Group brand and is not available to purchase from any other manufacturer.

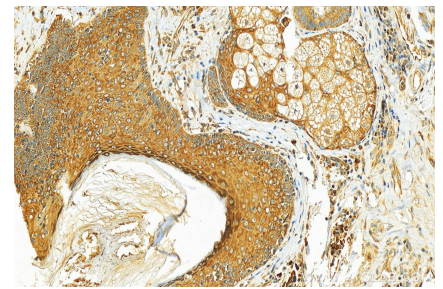
Selected Validation Data



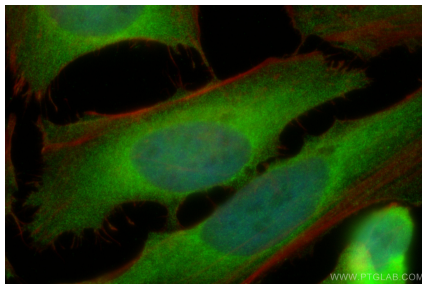
Various lysates were subjected to SDS PAGE followed by western blot with 55004-1-AP (Cyclin B1 antibody) at dilution of 1:2000 incubated at room temperature for 1.5 hours. This data was developed using the same antibody clone with 55004-1-PBS in a different storage buffer formulation.



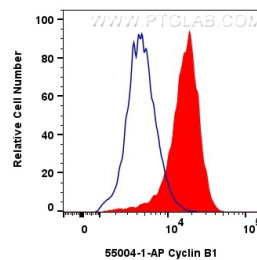
Immunohistochemical analysis of paraffin-embedded skin cancer slide using 55004-1-AP (Cyclin B1 antibody) at dilution of 1:400 (under 20x lens). Heat mediated antigen retrieval with Tris-EDTA buffer (pH 9.0). This data was developed using the same antibody clone with 55004-1-PBS in a different storage buffer formulation.



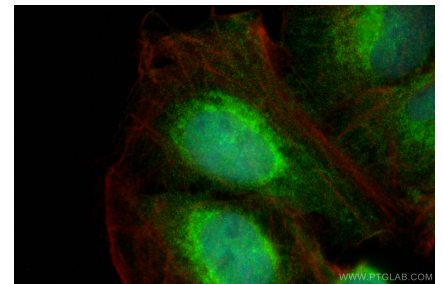
Immunohistochemical analysis of paraffin-embedded skin cancer slide using 55004-1-AP (Cyclin B1 antibody) at dilution of 1:400 (under 20x lens). Heat mediated antigen retrieval with Tris-EDTA buffer (pH 9.0). This data was developed using the same antibody clone with 55004-1-PBS in a different storage buffer formulation.



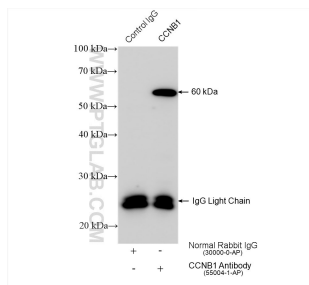
Immunofluorescent analysis of (4% PFA) fixed HeLa cells using Cyclin B1 antibody (55004-1-AP) at dilution of 1:400 and CoraLite@488-Conjugated AffiniPure Goat Anti-Rabbit IgG(H+L), CL594-phalloidin (red). This data was developed using the same antibody clone with 55004-1-PBS in a different storage buffer formulation.



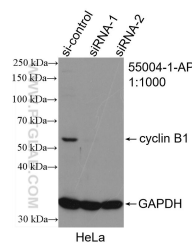
1x10⁶ HeLa cells were intracellularly stained with 0.4 ug Cyclin B1 Polyclonal antibody (55004-1-AP) (red), or 0.4 ug Rabbit IgG control Rabbit PolyAb (30000-0-AP) (blue). Cells were fixed and permeabilized with Transcription Factor Staining Buffer Kit (PF00011). This data was developed using the same antibody clone with 55004-1-PBS in a different storage buffer formulation.



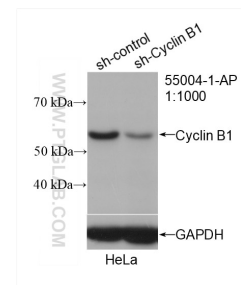
Immunofluorescent analysis of (4% PFA) fixed U2OS cells using Cyclin B1 antibody (55004-1-AP) at dilution of 1:400 and CoraLite@488-Conjugated AffiniPure Goat Anti-Rabbit IgG(H+L), CL594-phalloidin (red). This data was developed using the same antibody clone with 55004-1-PBS in a different storage buffer formulation.



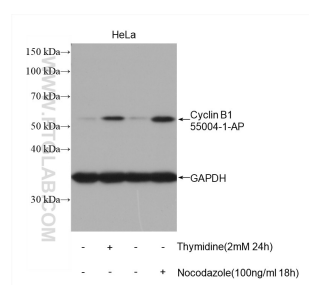
IP result of anti-Cyclin B1 (IP:55004-1-AP, 4ug; Detection:55004-1-AP 1:2000) with HeLa cells lysate 1560 ug. This data was developed using the same antibody clone with 55004-1-PBS in a different storage buffer formulation.



WB result of Cyclin B1 antibody (55004-1-AP; 1:1000; incubated at room temperature for 1.5 hours) with sh-Control and sh-Cyclin B1 transfected HeLa cells. This data was developed using the same antibody clone with 55004-1-PBS in a different storage buffer formulation.



WB result of Cyclin B1 antibody (55004-1-AP; 1:1000; incubated at room temperature for 1.5 hours) with sh-Control and sh-Cyclin B1 transfected HeLa cells. This data was developed using the same antibody clone with 55004-1-PBS in a different storage buffer formulation.



WB result of Cyclin B1 antibody (55004-1-AP; 1:1000; incubated at room temperature for 1.5 hours) with HeLa cells treated with Thymidine (2mM 24h) and Nocodazole (100ng/ml 18h). This data was developed using the same antibody clone with 55004-1-PBS in a different storage buffer formulation.

Non-treated HeLa and thymidine or nocodazole treated HeLa cells were subjected to SDS PAGE followed by western blot with 55004-1-AP (Cyclin B1 antibody) at dilution of 1:2000 incubated at room temperature for 1.5 hours. The membrane was stripped and re-blotted with GAPDH antibody as loading control. This data was developed using the same antibody clone with 55004-1-PBS in a different storage buffer formulation.