

For Research Use Only

# Synaptotagmin-12 Polyclonal antibody



Catalog Number: 55015-1-AP

1 Publications

## Basic Information

<b>Catalog Number:</b> 55015-1-AP	<b>GenBank Accession Number:</b> NM_177963	<b>Purification Method:</b> Antigen affinity purification
<b>Size:</b> 150ul , Concentration: 700 µg/ml by Nanodrop and 387 µg/ml by Bradford method using BSA as the standard;	<b>GeneID (NCBI):</b> 91683	<b>Recommended Dilutions:</b> WB 1:500-1:2400
<b>Source:</b> Rabbit	<b>Full Name:</b> synaptotagmin XII	
<b>Isotype:</b> IgG	<b>Calculated MW:</b> 47 kDa	
	<b>Observed MW:</b> 47 kDa	

## Applications

<b>Tested Applications:</b> WB, ELISA	<b>Positive Controls:</b> WB : mouse brain tissue, SH-SY5Y cells
<b>Cited Applications:</b> WB	
<b>Species Specificity:</b> human, mouse, rat	
<b>Cited Species:</b> mouse	

## Background Information

SYT12 belongs to the synaptotagmin family. It may be involved in Ca<sup>2+</sup>-dependent exocytosis of secretory vesicles through Ca<sup>2+</sup> and phospholipid binding to the C2 domain or may serve as Ca<sup>2+</sup> sensors in the process of vesicular trafficking and exocytosis. The antibody is specific to SYT12.

## Notable Publications

Author	Pubmed ID	Journal	Application
Yingchao Li	32587661	Oxid Med Cell Longev	WB

## Storage

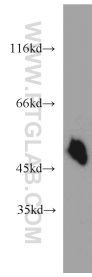
**Storage:**  
Store at -20°C.  
**Storage Buffer:**  
PBS with 0.02% sodium azide and 50% glycerol pH 7.3.  
Aliquoting is unnecessary for -20°C storage

\*\*\* 20ul sizes contain 0.1% BSA

For technical support and original validation data for this product please contact:  
T: 1 (888) 4PTGLAB (1-888-478-4522) (toll free in USA), or 1(312) 455-8498 (outside USA)  
E: proteintech@ptglab.com  
W: ptglab.com

This product is exclusively available under Proteintech Group brand and is not available to purchase from any other manufacturer.

## Selected Validation Data



mouse brain tissue were subjected to SDS PAGE followed by western blot with 55015-1-AP (Synaptotagmin-12 antibody) at dilution of 1:500 incubated at room temperature for 1.5 hours.