

For Research Use Only

Synaptotagmin-12 Polyclonal antibody, PBS Only

Catalog Number: 55015-1-PBS



Basic Information

Catalog Number:

55015-1-PBS

Size:

100ug, Concentration: 1 mg/ml by
Nanodrop;

Source:

Rabbit

Isotype:

IgG

GenBank Accession Number:

NM_177963

GeneID (NCBI):

91683

UNIPROT ID:

Q8IV01

Full Name:

synaptotagmin XII

Calculated MW:

47 kDa

Observed MW:

47 kDa

Purification Method:

Antigen affinity purification

Applications

Tested Applications:

WB, Indirect ELISA

Species Specificity:

human, mouse, rat

Background Information

SYT12 belongs to the synaptotagmin family. It may be involved in Ca²⁺-dependent exocytosis of secretory vesicles through Ca²⁺ and phospholipid binding to the C2 domain or may serve as Ca²⁺ sensors in the process of vesicular trafficking and exocytosis. The antibody is specific to STY12.

Storage

Storage:

Store at -80°C.

Storage Buffer:

PBS only, pH7.3

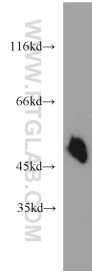
For technical support and original validation data for this product please contact:

T: 1 (888) 4PTGLAB (1-888-478-4522) (toll free
in USA), or 1(312) 455-8498 (outside USA)

E: proteintech@ptglab.com
W: ptglab.com

This product is exclusively available under Proteintech Group brand and is not available to purchase from any other manufacturer.

Selected Validation Data



mouse brain tissue were subjected to SDS PAGE followed by western blot with 55015-1-AP (Synaptotagmin-12 antibody) at dilution of 1:500 incubated at room temperature for 1.5 hours. This data was developed using the same antibody clone with 55015-1-PBS in a different storage buffer formulation.