

For Research Use Only

# Annexin A1 Polyclonal antibody

Catalog Number: 55018-1-AP

8 Publications



## Basic Information

<b>Catalog Number:</b> 55018-1-AP	<b>GenBank Accession Number:</b> NM_000700	<b>Purification Method:</b> Antigen affinity purification
<b>Size:</b> 150ul , Concentration: 300 µg/ml by Nanodrop and 260 µg/ml by Bradford method using BSA as the standard;	<b>GeneID (NCBI):</b> 301	<b>Recommended Dilutions:</b> WB 1:500-1:2000 IHC 1:20-1:200
<b>Source:</b> Rabbit	<b>Full Name:</b> annexin A1	
<b>Isotype:</b> IgG	<b>Calculated MW:</b> 40 kDa	
	<b>Observed MW:</b> 39 kDa	

## Applications

<b>Tested Applications:</b> FC, IHC, WB, ELISA	<b>Positive Controls:</b>
<b>Cited Applications:</b> IF, IHC, WB	<b>WB :</b> C2C12 cell, HeLa cells, NIH/3T3 cells, HepG2 cells, C6 cells, K-562 cells
<b>Species Specificity:</b> human, mouse, rat	<b>IHC :</b> human oesophagus tissue, human colon tissue
<b>Cited Species:</b> human, monkey, mouse	
<b>Note-IHC: suggested antigen retrieval with TE buffer pH 9.0; (*) Alternatively, antigen retrieval may be performed with citrate buffer pH 6.0</b>	

## Background Information

ANXA1, also named as ANX1, LPC1 and p35, belongs to the annexin family. It is a member of the annexin family of Ca<sup>2+</sup>-binding and phospholipidbinding proteins, and it is particularly abundant in various populations of peripheral blood leukocytes. ANXA1 regulates phospholipase A2 activity. It seems to bind from two to four calcium ions with high affinity. ANXA1 is a pleiotrophic protein produced by many cell types including peripheral blood leukocytes. The antibody is specific to ANXA1.

## Notable Publications

Author	Pubmed ID	Journal	Application
Peng Huang	27833268	Mediators Inflamm	WB, IF
Biaoxue Rong	25360220	Am J Transl Res	IHC
Rong Biaoxue	25300907	Expert Rev Mol Diagn	

## Storage

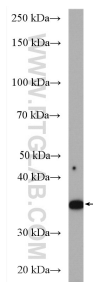
**Storage:**  
Store at -20°C.  
**Storage Buffer:**  
PBS with 0.02% sodium azide and 50% glycerol pH 7.3.  
Aliquoting is unnecessary for -20°C storage

\*\*\* 20ul sizes contain 0.1% BSA

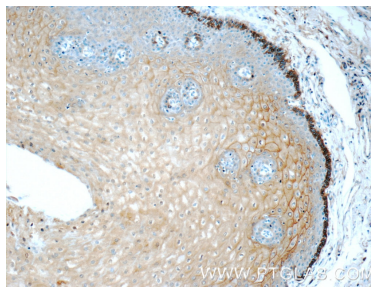
For technical support and original validation data for this product please contact:  
T: 1 (888) 4PTGLAB (1-888-478-4522) (toll free in USA), or 1(312) 455-8498 (outside USA)  
E: [proteintech@ptglab.com](mailto:proteintech@ptglab.com)  
W: [ptglab.com](http://ptglab.com)

This product is exclusively available under Proteintech Group brand and is not available to purchase from any other manufacturer.

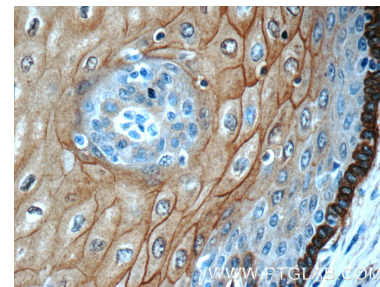
## Selected Validation Data



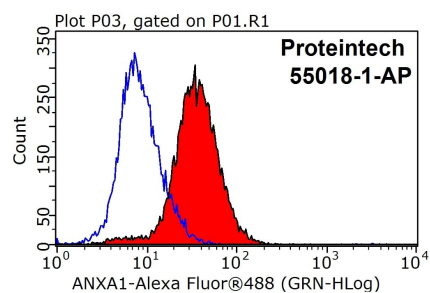
C2C12 cell were subjected to SDS PAGE followed by western blot with 55018-1-AP (Annexin A1 antibody) at dilution of 1:1000 incubated at room temperature for 1.5 hours.



Immunohistochemical analysis of paraffin-embedded human oesophagus tissue slide using 55018-1-AP (Annexin A1 antibody at dilution of 1:50 (under 10x lens).



Immunohistochemical analysis of paraffin-embedded human oesophagus tissue slide using 55018-1-AP (Annexin A1 antibody at dilution of 1:50 (under 40x lens).



1X10<sup>6</sup> HeLa cells were stained with 0.2ug Annexin A1 antibody (55018-1-AP, red) and control antibody (blue). Fixed with 90% MeOH blocked with 3% BSA (30 min). Alexa Fluor 488-conjugated AffiniPure Goat Anti-Rabbit IgG(H+L) with dilution 1:1000.