

For Research Use Only

SCGF Polyclonal antibody

Catalog Number: 55019-1-AP

1 Publications



Basic Information

Catalog Number:

55019-1-AP

Size:

150ul, Concentration: 300 ug/ml by Nanodrop and 293 ug/ml by Bradford method using BSA as the standard;

Source:

Rabbit

Isotype:

IgG

GenBank Accession Number:

NM_002975

GeneID (NCBI):

6320

UNIPROT ID:

Q9Y240

Full Name:

C-type lectin domain family 11, member A

Calculated MW:

36 kDa

Observed MW:

36 kDa

Purification Method:

Antigen affinity purification

Recommended Dilutions:

WB 1:500-1:1000

Applications

Tested Applications:

WB, ELISA

Cited Applications:

IF

Species Specificity:

human

Positive Controls:

WB : human skeletal muscle tissue,

Background Information

CLEC11A, also named as CLECSF3, LSLCL, SCGF and p47, stimulates the proliferation and differentiation of hematopoietic precursor cells from various lineages, including erythrocytes, lymphocytes, granulocytes and macrophages. CLEC11A acts synergistically with other cytokines, including IL-3, GCSF, GMCSF and FLT3 ligand. It suppresses SCF-stimulated erythrocyte proliferation. The antibody is specific to CLEC11A.

Notable Publications

Author	Pubmed ID	Journal	Application
Jinghua Fang	39462005	Nat Commun	IF

Storage

Storage:

Store at -20°C. Stable for one year after shipment.

Storage Buffer:

PBS with 0.02% sodium azide and 50% glycerol pH 7.3.

Aliquoting is unnecessary for -20°C storage

*** 20ul sizes contain 0.1% BSA

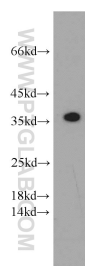
For technical support and original validation data for this product please contact:

T: 1 (888) 4PTGLAB (1-888-478-4522) (toll free in USA), or 1(312) 455-8498 (outside USA)

E: proteintech@ptglab.com
W: ptglab.com

This product is exclusively available under Proteintech Group brand and is not available to purchase from any other manufacturer.

Selected Validation Data



human skeletal muscle tissue were subjected to SDS PAGE followed by western blot with 55019-1-AP (SCGF antibody) at dilution of 1:500 incubated at room temperature for 1.5 hours.