

For Research Use Only

# GBX1 Polyclonal antibody, PBS Only

Catalog Number: 55035-1-PBS



## Basic Information

Catalog Number:

55035-1-PBS

Size:

100ug, Concentration: 1 mg/ml by Nanodrop;

Source:

Rabbit

Isotype:

IgG

GenBank Accession Number:

NM\_001098834

GeneID (NCBI):

2636

UNIPROT ID:

Q14549

Full Name:

gastrulation brain homeobox 1

Calculated MW:

38 kDa

Observed MW:

38-42 kDa

Purification Method:

Antigen affinity purification

## Applications

Tested Applications:

IHC, IF-P, Indirect ELISA

Species Specificity:

human, mouse, rat

## Storage

Storage:

Store at -80°C.

Storage Buffer:

PBS only, pH7.3

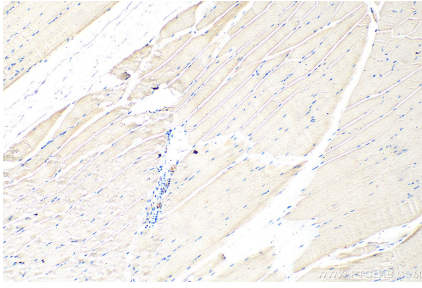
For technical support and original validation data for this product please contact:

T: 1 (888) 4PTGLAB (1-888-478-4522) (toll free in USA), or 1(312) 455-8498 (outside USA)

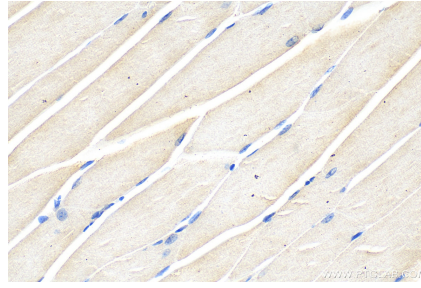
E: [proteintech@ptglab.com](mailto:proteintech@ptglab.com)  
W: [ptglab.com](http://ptglab.com)

This product is exclusively available under Proteintech Group brand and is not available to purchase from any other manufacturer.

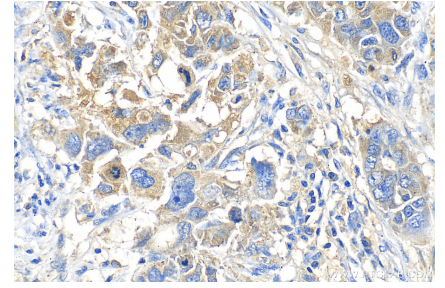
## Selected Validation Data



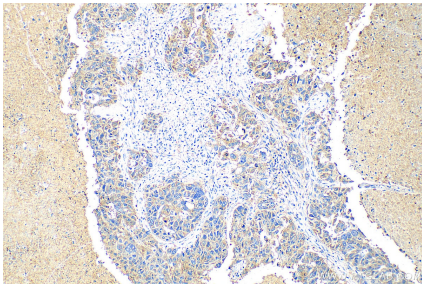
Immunohistochemical analysis of paraffin-embedded mouse skeletal muscle tissue slide using 55035-1-AP (GBX1 antibody) at dilution of 1:200 (under 10x lens). Heat mediated antigen retrieval with Tris-EDTA buffer (pH 9.0). This data was developed using the same antibody clone with 55035-1-PBS in a different storage buffer formulation.



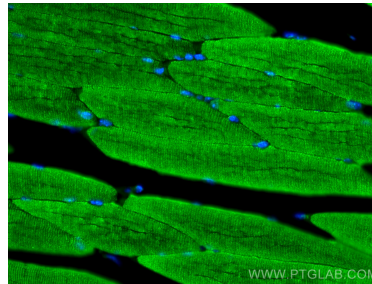
Immunohistochemical analysis of paraffin-embedded mouse skeletal muscle tissue slide using 55035-1-AP (GBX1 antibody) at dilution of 1:200 (under 40x lens). Heat mediated antigen retrieval with Tris-EDTA buffer (pH 9.0). This data was developed using the same antibody clone with 55035-1-PBS in a different storage buffer formulation.



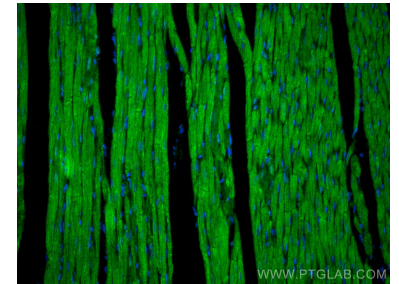
Immunohistochemical analysis of paraffin-embedded human ovary cancer tissue slide using 55035-1-AP (GBX1 antibody) at dilution of 1:200 (under 40x lens). Heat mediated antigen retrieval with Tris-EDTA buffer (pH 9.0). This data was developed using the same antibody clone with 55035-1-PBS in a different storage buffer formulation.



Immunohistochemical analysis of paraffin-embedded human ovary cancer tissue slide using 55035-1-AP (GBX1 antibody) at dilution of 1:200 (under 10x lens). Heat mediated antigen retrieval with Tris-EDTA buffer (pH 9.0). This data was developed using the same antibody clone with 55035-1-PBS in a different storage buffer formulation.



Immunofluorescent analysis of (4% PFA) fixed paraffin-embedded mouse skeletal muscle tissue using GBX1 antibody (55035-1-AP) at dilution of 1:200 and CoraLite@488-Conjugated Goat Anti-Rabbit IgG(H+L) (SA00013-2). Heat mediated antigen retrieval with Tris-EDTA buffer (pH 9.0). This data was developed using the same antibody clone with 55035-1-PBS in a different storage buffer formulation.



Immunofluorescent analysis of (4% PFA) fixed paraffin-embedded rat heart tissue using GBX1 antibody (55035-1-AP) at dilution of 1:200 and CoraLite@488-Conjugated Goat Anti-Rabbit IgG(H+L) (SA00013-2). Heat mediated antigen retrieval with Tris-EDTA buffer (pH 9.0). This data was developed using the same antibody clone with 55035-1-PBS in a different storage buffer formulation.