

For Research Use Only

# SOS1 Polyclonal antibody

Catalog Number: 55041-1-AP **3 Publications**



## Basic Information

<b>Catalog Number:</b> 55041-1-AP	<b>GenBank Accession Number:</b> NM_005633	<b>Purification Method:</b> Antigen affinity purification
<b>Size:</b> 150ul, Concentration: 1200 µg/ml by Nanodrop;	<b>GeneID (NCBI):</b> 6654	<b>Recommended Dilutions:</b> WB 1:500-1:2000 IP 0.5-4.0 ug for 1.0-3.0 mg of total protein lysate IHC 1:50-1:500 IF 1:50-1:500
<b>Source:</b> Rabbit	<b>UNIPROT ID:</b> Q07889	
<b>Isotype:</b> IgG	<b>Full Name:</b> son of sevenless homolog 1 (Drosophila)	
	<b>Calculated MW:</b> 152 kDa	
	<b>Observed MW:</b> 152 kDa	

## Applications

### Tested Applications:

IF, IHC, IP, WB, ELISA

### Cited Applications:

WB

### Species Specificity:

human, mouse, rat

### Cited Species:

human

**Note-IHC: suggested antigen retrieval with TE buffer pH 9.0; (\*) Alternatively, antigen retrieval may be performed with citrate buffer pH 6.0**

### Positive Controls:

**WB:** K-562 cells, mouse brain tissue, THP-1 cells, SKOV-3 cells

**IP:** mouse brain tissue,

**IHC:** mouse colon tissue, human lung cancer tissue

**IF:** HeLa cells,

## Background Information

SOS1 promotes the exchange of Ras-bound GDP by GTP. EPS8, E3B1 and SOS1 form a tricomplex in vivo that exhibits RAC-specific guanine nucleotide exchange factor activity in vitro. Defects in SOS1 are the cause of gingival fibromatosis 1 (GGF1). Defects in SOS1 are the cause of Noonan syndrome type 4 (NS4). The antibody is specific to SOS1.

## Notable Publications

Author	Pubmed ID	Journal	Application
Damian Kotat	35563688	Cells	WB
Jishuang Ding	38237399	Pathol Res Pract	WB
Qiwei Jiang	37294756	Sci Adv	WB

## Storage

### Storage:

Store at -20°C. Stable for one year after shipment.

### Storage Buffer:

0.1M NaHCO<sub>3</sub>, 0.1M glycine, 0.02% sodium azide and 50% glycerol pH 7.3.

Aliquoting is unnecessary for -20°C storage

**\*\*\* 20ul sizes contain 0.1% BSA**

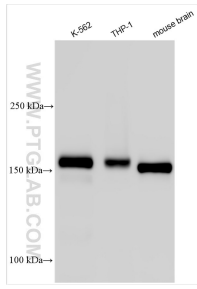
For technical support and original validation data for this product please contact:

T: 1 (888) 4PTGLAB (1-888-478-4522) (toll free in USA), or 1(312) 455-8498 (outside USA)

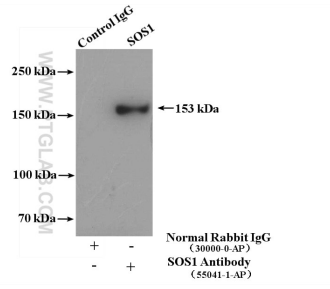
E: proteintech@ptglab.com  
W: ptglab.com

**This product is exclusively available under Proteintech Group brand and is not available to purchase from any other manufacturer.**

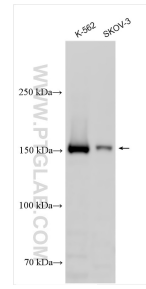
## Selected Validation Data



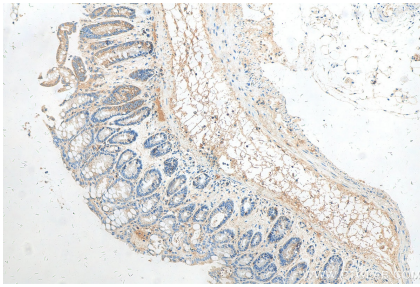
Various lysates were subjected to SDS PAGE followed by western blot with 55041-1-AP (SOS1 antibody) at dilution of 1:1000 incubated at room temperature for 1.5 hours.



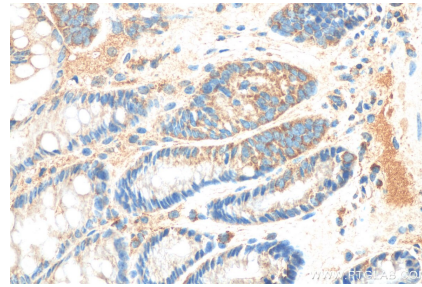
IP result of anti-SOS1 (IP:55041-1-AP, 4ug; Detection:55041-1-AP 1:500) with mouse brain tissue lysate 4000ug.



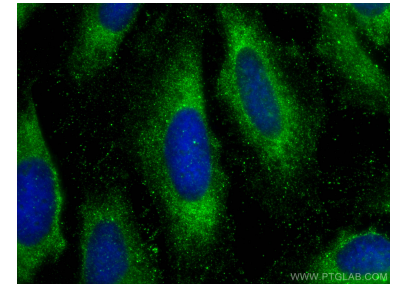
Various lysates were subjected to SDS PAGE followed by western blot with 55041-1-AP (SOS1 antibody) at dilution of 1:500 incubated at room temperature for 1.5 hours.



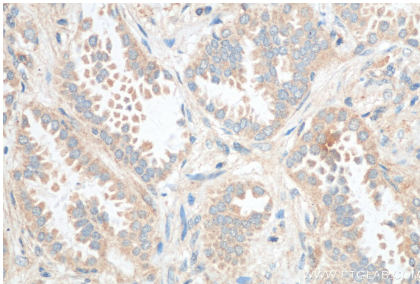
Immunohistochemical analysis of paraffin-embedded mouse colon tissue slide using 55041-1-AP (SOS1 antibody) at dilution of 1:200 (under 10x lens). Heat mediated antigen retrieval with Tris-EDTA buffer (pH 9.0).



Immunohistochemical analysis of paraffin-embedded mouse colon tissue slide using 55041-1-AP (SOS1 antibody) at dilution of 1:200 (under 40x lens). Heat mediated antigen retrieval with Tris-EDTA buffer (pH 9.0).



Immunofluorescent analysis of (-20°C Ethanol) fixed HeLa cells using SOS1 antibody (55041-1-AP) at dilution of 1:200 and CoraLite®488-Conjugated AffiniPure Goat Anti-Rabbit IgG(H+L).



Immunohistochemical analysis of paraffin-embedded human lung cancer tissue slide using 55041-1-AP (SOS1 antibody) at dilution of 1:200 (under 40x lens). Heat mediated antigen retrieval with Tris-EDTA buffer (pH 9.0).