

For Research Use Only

# MAGI1 Polyclonal antibody

Catalog Number: 55048-1-AP

Featured Product

2 Publications



## Basic Information

<b>Catalog Number:</b> 55048-1-AP	<b>GenBank Accession Number:</b> NM_004742	<b>Purification Method:</b> Antigen affinity purification
<b>Size:</b> 150ul , Concentration: 740 µg/ml by Nanodrop;	<b>GeneID (NCBI):</b> 9223	<b>Recommended Dilutions:</b> WB 1:500-1:1000
<b>Source:</b> Rabbit	<b>Full Name:</b> membrane associated guanylate kinase, WW and PDZ domain containing 1	
<b>Isotype:</b> IgG	<b>Calculated MW:</b> 165 kDa	
	<b>Observed MW:</b> 160-170 kDa, 110-120 kDa	

## Applications

<b>Tested Applications:</b> WB, ELISA	<b>Positive Controls:</b> WB : mouse brain tissue, human brain tissue, mouse kidney tissue, rat brain tissue
<b>Cited Applications:</b> WB	
<b>Species Specificity:</b> human, mouse, rat	
<b>Cited Species:</b> human, mouse	

## Background Information

MAGI1, also named as AIP3, BAIAP1, BAP1 and TNRC19, may play a role as scaffolding protein at cell-cell junctions. MAGI1 regulates acid-induced ACCN3 currents by modulating its expression at the cell surface. The antibody is specific to MAGI1. The antibody can recognize all the isoform of MAGI1.

## Notable Publications

Author	Pubmed ID	Journal	Application
Yuanyuan Bai	36308410	J Cell Mol Med	WB
Cong Cao	34422806	Front Cell Dev Biol	WB

## Storage

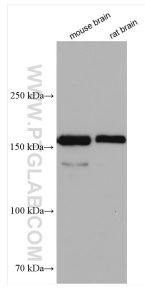
**Storage:**  
Store at -20°C.  
**Storage Buffer:**  
PBS with 0.02% sodium azide and 50% glycerol pH 7.3.  
Aliquoting is unnecessary for -20°C storage

\*\*\* 20ul sizes contain 0.1% BSA

For technical support and original validation data for this product please contact:  
T: 1 (888) 4PTGLAB (1-888-478-4522) (toll free in USA), or 1(312) 455-8498 (outside USA)  
E: proteintech@ptglab.com  
W: ptglab.com

This product is exclusively available under Proteintech Group brand and is not available to purchase from any other manufacturer.

## Selected Validation Data



Various lysates were subjected to SDS PAGE followed by western blot with 55048-1-AP (MAG1 antibody) at dilution of 1:800 incubated at room temperature for 1.5 hours.