

For Research Use Only

B3GALT6 Polyclonal antibody

Catalog Number: 55049-1-AP



Basic Information

Catalog Number: 55049-1-AP	GenBank Accession Number: NM_080605	Purification Method: Antigen affinity purification
Size: 150ul, Concentration: 800 µg/ml by Nanodrop and 313 µg/ml by Bradford method using BSA as the standard;	GeneID (NCBI): 126792	Recommended Dilutions: WB 1:500-1:2000 IHC 1:20-1:200
Source: Rabbit	Full Name: UDP-Gal:betaGal beta 1,3-galactosyltransferase polypeptide 6	
Isotype: IgG	Calculated MW: 37 kDa	
	Observed MW: 37 kDa	

Applications

Tested Applications:

IHC, WB, ELISA

Species Specificity:

human, mouse

Note-IHC: suggested antigen retrieval with TE buffer pH 9.0; (*) Alternatively, antigen retrieval may be performed with citrate buffer pH 6.0

Positive Controls:

WB: mouse brain tissue, mouse liver tissue

IHC: human liver cancer tissue, human liver tissue

Background Information

B3GALT6 belongs to the glycosyltransferase 31 family. It transfers galactose from UDP-galactose to substrates with a terminal beta-linked galactose residue. B3GALT6 has a preference for galactose-beta-1,4-xylose that is found in the linker region of glycosaminoglycans, such as heparan sulfate and chondroitin sulfate. It has no activity towards substrates with terminal glucosamine or galactosamine residues. The antibody is specific to B3GALT6.

Storage

Storage:

Store at -20°C.

Storage Buffer:

PBS with 0.02% sodium azide and 50% glycerol pH 7.3.

Aliquoting is unnecessary for -20°C storage

*** 20ul sizes contain 0.1% BSA

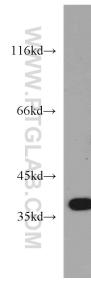
For technical support and original validation data for this product please contact:

T: 1 (888) 4PTGLAB (1-888-478-4522) (toll free in USA), or 1(312) 455-8498 (outside USA)

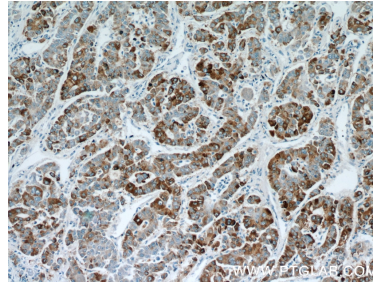
E: proteintech@ptglab.com
W: ptglab.com

This product is exclusively available under Proteintech Group brand and is not available to purchase from any other manufacturer.

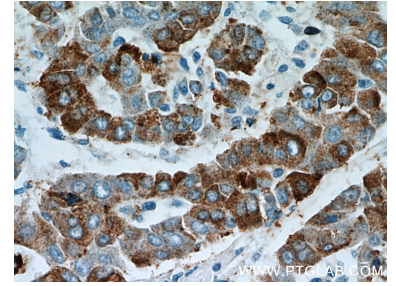
Selected Validation Data



mouse brain tissue were subjected to SDS PAGE followed by western blot with 55049-1-AP (B3GALT6 antibody) at dilution of 1:500 incubated at room temperature for 1.5 hours.



Immunohistochemical analysis of paraffin-embedded human liver cancer using 55049-1-AP (B3GALT6 antibody) at dilution of 1:50 (under 10x lens).



Immunohistochemical analysis of paraffin-embedded human liver cancer using 55049-1-AP (B3GALT6 antibody) at dilution of 1:50 (under 40x lens).