

For Research Use Only

# GSX1 Polyclonal antibody

Catalog Number: 55050-1-AP



## Basic Information

### Catalog Number:

55050-1-AP

### Size:

150ul , Concentration: 1500 ug/ml by Nanodrop and 613 ug/ml by Bradford method using BSA as the standard;

### Source:

Rabbit

### Isotype:

IgG

### GenBank Accession Number:

NM\_145657

### GeneID (NCBI):

219409

### UNIPROT ID:

Q9H4S2

### Full Name:

GS homeobox 1

### Calculated MW:

28 kDa

### Observed MW:

25-28 kDa

### Purification Method:

Antigen affinity purification

### Recommended Dilutions:

WB 1:500-1:1000

## Applications

### Tested Applications:

WB, ELISA

### Species Specificity:

human, mouse, rat

### Positive Controls:

WB : mouse liver tissue,

## Background Information

GSX1, also named as GSH1, belongs to the Antp homeobox family. It is probable transcription factor that binds to the DNA sequence 5'-GC[TA][AC]ATTA[GA]-3'. GSX1 activates the transcription of the GHRH gene. It plays an important role in pituitary development. The antibody is specific to GSX1.

## Storage

### Storage:

Store at -20°C. Stable for one year after shipment.

### Storage Buffer:

PBS with 0.02% sodium azide and 50% glycerol pH 7.3.

Aliquoting is unnecessary for -20°C storage

\*\*\* 20ul sizes contain 0.1% BSA

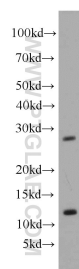
For technical support and original validation data for this product please contact:

T: 1 (888) 4PTGLAB (1-888-478-4522) (toll free in USA), or 1(312) 455-8498 (outside USA)

E: [proteintech@ptglab.com](mailto:proteintech@ptglab.com)  
W: [ptglab.com](http://ptglab.com)

This product is exclusively available under Proteintech Group brand and is not available to purchase from any other manufacturer.

## Selected Validation Data



mouse liver tissue were subjected to SDS PAGE followed by western blot with 55050-1-AP (GSX1 antibody) at dilution of 1:500 incubated at room temperature for 1.5 hours.