

For Research Use Only

MAP1A Polyclonal antibody

Catalog Number: 55062-1-AP



Basic Information

| | | |
|--|--|--|
| Catalog Number: 55062-1-AP | GenBank Accession Number: NM_002373 | Purification Method: Antigen affinity purification |
| Size: 150ul , Concentration: 450 ug/ml by Nanodrop and 307 ug/ml by Bradford method using BSA as the standard; | GeneID (NCBI): 4130 | Recommended Dilutions: IHC 1:250-1:1000 |
| Source: Rabbit | UNIPROT ID: P78559 | |
| Isotype: IgG | Full Name: microtubule-associated protein 1A | |
| | Calculated MW: 305 kDa | |

Applications

| | |
|--|--|
| Tested Applications: IHC, ELISA | Positive Controls: IHC : mouse cerebellum tissue, rat brain tissue |
| Species Specificity: mouse, rat, human | |

Note-IHC: suggested antigen retrieval with TE buffer pH 9.0; (*) Alternatively, antigen retrieval may be performed with citrate buffer pH 6.0

Background Information

The assembly of microtubules, an essential step in neurogenesis, is modulated by the family of microtubule-associated proteins (MAPs). These proteins have been divided into 2 main groups by molecular mass, high molecular weight MAPs, which include MAP1A, MAP1B, and MAP2, and another group of intermediate-sized proteins, which include the abundant tau MAPs. MAP1A is the largest brain MAP and expressed prominently in dendrites and to a lesser extent in cell bodies and axons. This protein is involved in differentiation of axons and dendrites as well as maintenance of the microtubule cytoskeleton in mature neurons.

Storage

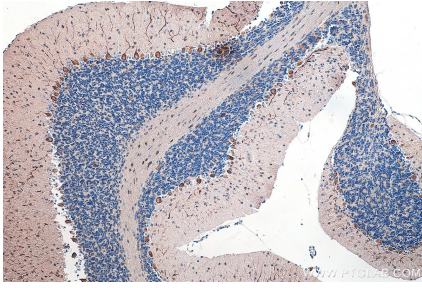
Storage:
Store at -20°C. Stable for one year after shipment.
Storage Buffer:
0.1M NaHCO₃, 0.1M glycine, 0.02% sodium azide and 50% glycerol pH 7.3.
Aliquoting is unnecessary for -20°C storage

*** 20ul sizes contain 0.1% BSA

For technical support and original validation data for this product please contact:
T: 1 (888) 4PTGLAB (1-888-478-4522) (toll free in USA), or 1(312) 455-8498 (outside USA)
E: proteintech@ptglab.com
W: ptglab.com

This product is exclusively available under Proteintech Group brand and is not available to purchase from any other manufacturer.

Selected Validation Data



Immunohistochemical analysis of paraffin-embedded mouse cerebellum tissue slide using 55062-1-AP (MAP1A antibody) at dilution of 1:500 (under 0x lens). Heat mediated antigen retrieval with Tris-EDTA buffer (pH 9.0).