

For Research Use Only

# MYH2-specific Polyclonal antibody

Catalog Number: 55069-1-AP

2 Publications



## Basic Information

### Catalog Number:

55069-1-AP

### Size:

150ul, Concentration: 350 µg/ml by Nanodrop and 260 µg/ml by Bradford method using BSA as the standard;

### Source:

Rabbit

### Isotype:

IgG

### GenBank Accession Number:

NM\_017534

### GeneID (NCBI):

4620

### UNIPROT ID:

Q9UIK2

### Full Name:

myosin, heavy chain 2, skeletal muscle, adult

### Calculated MW:

223 kDa

### Observed MW:

200 kDa

### Purification Method:

Antigen affinity purification

### Recommended Dilutions:

WB 1:500-1:1000

IHC 1:20-1:200

## Applications

### Tested Applications:

IHC, WB, ELISA

### Cited Applications:

WB, IF

### Species Specificity:

human

### Cited Species:

rat, mouse

### Positive Controls:

WB: multi-cells/tissue, human skeletal muscle tissue

IHC: human skeletal muscle tissue, human bladder tissue

**Note-IHC: suggested antigen retrieval with TE buffer pH 9.0; (\*) Alternatively, antigen retrieval may be performed with citrate buffer pH 6.0**

## Background Information

MYH2 (Myosin II) is a member of the class II or conventional myosin heavy chains. Myosin II was first isolated from muscle but is also found in non muscle cells, and it is especially enriched in highly motile cell types such as amoebae. It forms bipolar filaments that interact with actin filaments to produce contraction. And it is the motor protein that generates force to drive muscle contraction. Functions in skeletal muscle contraction. The antibody is specific to MYH2, will not bind other myosins. It is a skeletal muscle specific antibody.

## Notable Publications

Author	Pubmed ID	Journal	Application
Xueqiao Wang	36555347	Int J Mol Sci	WB
Shan Gao	38282163	Sci Rep	IF

## Storage

### Storage:

Store at -20°C.

### Storage Buffer:

0.1M NaHCO<sub>3</sub>, 0.1M glycine, 0.02% sodium azide and 50% glycerol pH 7.3.

Aliquoting is unnecessary for -20°C storage

\*\*\* 20ul sizes contain 0.1% BSA

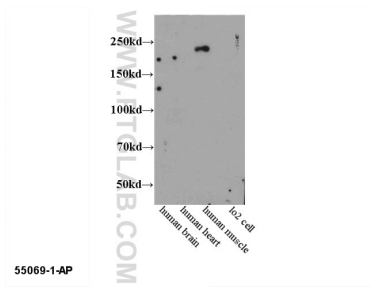
For technical support and original validation data for this product please contact:

T: 1 (888) 4PTGLAB (1-888-478-4522) (toll free in USA), or 1(312) 455-8498 (outside USA)

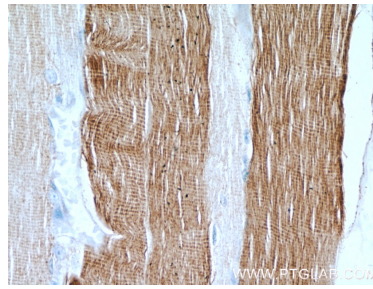
E: proteintech@ptglab.com  
W: ptglab.com

This product is exclusively available under Proteintech Group brand and is not available to purchase from any other manufacturer.

## Selected Validation Data



WB results of 55069-1-AP (anti-MYH2).



Immunohistochemical analysis of paraffin-embedded human skeletal muscle using 55069-1-AP (MYH2 antibody) at dilution of 1:50 (under 40x lens).



Immunohistochemical analysis of paraffin-embedded human skeletal muscle using 55069-1-AP (MYH2 antibody) at dilution of 1:50 (under 10x lens).