

For Research Use Only

PLA2G4B Polyclonal antibody

Catalog Number: 55074-1-AP



Basic Information

Catalog Number:

55074-1-AP

Size:

150ul, Concentration: 300 ug/ml by Nanodrop and 193 ug/ml by Bradford method using BSA as the standard;

Source:

Rabbit

Isotype:

IgG

GenBank Accession Number:

NM_001114633

GeneID (NCBI):

100137049

UNIPROT ID:

POC869

Full Name:

phospholipase A2, group IVB (cytosolic)

Calculated MW:

88 kDa

Observed MW:

~88 kDa

Purification Method:

Antigen affinity purification

Recommended Dilutions:

WB 1:200-1:1000

IHC 1:20-1:200

Applications

Tested Applications:

WB, IHC, ELISA

Species Specificity:

human

Positive Controls:

WB : human plasma tissue,

IHC : human gliomas tissue,

Note-IHC: suggested antigen retrieval with TE buffer pH 9.0; (*) Alternatively, antigen retrieval may be performed with citrate buffer pH 6.0

Background Information

PLA2G4B, also named as cPLA2-beta, is a member of the cytosolic phospholipase A2 protein family. It is calcium-dependent phospholipase A2 that selectively hydrolyzes glycerophospholipids in the sn-2 position with a preference for arachidonoyl phospholipids. PLA2G4B has five isoforms with MW 88 kDa, 100 kDa, 55 kDa and 114 kDa.

Storage

Storage:

Store at -20°C.

Storage Buffer:

0.1M NaHCO₃, 0.1M glycine, 0.02% sodium azide and 50% glycerol pH 7.3.

Aliquoting is unnecessary for -20°C storage

*** 20ul sizes contain 0.1% BSA

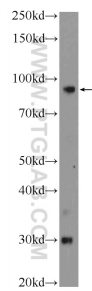
For technical support and original validation data for this product please contact:

T: 1 (888) 4PTGLAB (1-888-478-4522) (toll free in USA), or 1(312) 455-8498 (outside USA)

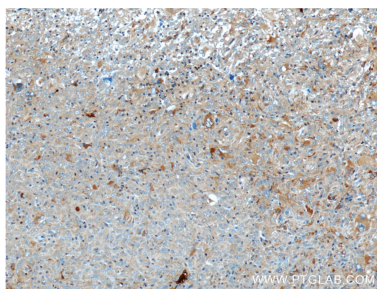
E: proteintech@ptglab.com
W: ptglab.com

This product is exclusively available under Proteintech Group brand and is not available to purchase from any other manufacturer.

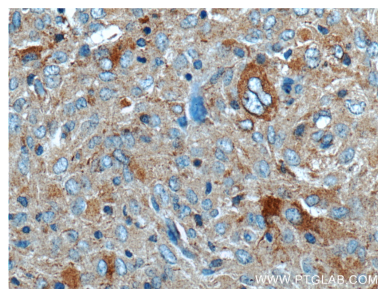
Selected Validation Data



human plasma were subjected to SDS PAGE followed by western blot with 55074-1-AP (PLA2G4B Antibody) at dilution of 1:300 incubated at room temperature for 1.5 hours.



Immunohistochemical analysis of paraffin-embedded human gliomas tissue slide using 55074-1-AP (PLA2G4B Antibody) at dilution of 1:50 (under 10x lens).



Immunohistochemical analysis of paraffin-embedded human gliomas tissue slide using 55074-1-AP (PLA2G4B Antibody) at dilution of 1:50 (under 40x lens).