

For Research Use Only

# Ephrin B3 Polyclonal antibody, PBS Only

Catalog Number: 55080-1-PBS



## Basic Information

<b>Catalog Number:</b> 55080-1-PBS	<b>GenBank Accession Number:</b> NM_001406	<b>Purification Method:</b> Antigen affinity purification
<b>Size:</b> 100ug, Concentration: 1 mg/ml by Nanodrop;	<b>GeneID (NCBI):</b> 1949	
<b>Source:</b> Rabbit	<b>UNIPROT ID:</b> Q15768	
<b>Isotype:</b> IgG	<b>Full Name:</b> ephrin-B3	
	<b>Calculated MW:</b> 36 kDa	
	<b>Observed MW:</b> 45-50 kDa	

## Applications

**Tested Applications:**  
WB, Indirect ELISA

**Species Specificity:**  
human

## Background Information

Ephrin-B3 is a transmembrane ligand that binds primarily to EphB receptors to mediate bidirectional cell signaling, crucial for neural development, axon guidance, and synaptic plasticity. Highly expressed in the brain and spinal cord, it acts as a midline repellent to guide axonal pathfinding (PMID: 16951161). Ephrin-B3 is important in the regulation of cell proliferation, differentiation and migration via cell-cell contact, and can activate the reelin pathway during brain development. The band of ephrin-B3 was identical to phosphorylated ephrin-B at 50 kDa (PMID: 16951161, 21447033).

## Storage

**Storage:**  
Store at -80°C.

**Storage Buffer:**  
PBS only, pH7.3

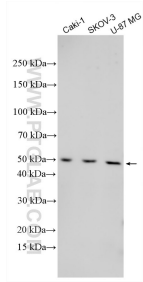
For technical support and original validation data for this product please contact:

T: 1 (888) 4PTGLAB (1-888-478-4522) (toll free in USA), or 1(312) 455-8498 (outside USA)

E: [proteintech@ptglab.com](mailto:proteintech@ptglab.com)  
W: [ptglab.com](http://ptglab.com)

**This product is exclusively available under Proteintech Group brand and is not available to purchase from any other manufacturer.**

## Selected Validation Data



Various lysates were subjected to SDS PAGE followed by western blot with 55080-1-AP (Ephrin B3 antibody) at dilution of 1:1000 incubated at room temperature for 1.5 hours. This data was developed using the same antibody clone with 55080-1-PBS in a different storage buffer formulation.