

For Research Use Only

# DRD2 Polyclonal antibody, PBS Only

Catalog Number: 55084-1-PBS

Featured Product



## Basic Information

**Catalog Number:**

55084-1-PBS

**Size:**

100ug, Concentration: 1 mg/ml by Nanodrop;

**Source:**

Rabbit

**Isotype:**

IgG

**GenBank Accession Number:**

NM\_016574

**GeneID (NCBI):**

1813

**UNIPROT ID:**

P14416

**Full Name:**

dopamine receptor D2

**Calculated MW:**

51 kDa

**Observed MW:**

50-60 kDa

**Purification Method:**

Antigen affinity purification

## Applications

**Tested Applications:**

WB, IF-P, IF-Fro, IP, Indirect ELISA

**Species Specificity:**

human, mouse

## Background Information

DRD2, also named D2DR and D2R, belongs to the G-protein coupled receptor 1 family. It is one of the five types (D1 to D5) of receptors for dopamine. The activity of DRD2 is mediated by G proteins which inhibit adenylyl cyclase. Defects in DRD2 are associated with dystonia type 11 (DYT11). The antibody is specific to DRD2.

## Storage

**Storage:**

Store at -80°C.

**Storage Buffer:**

PBS only, pH7.3

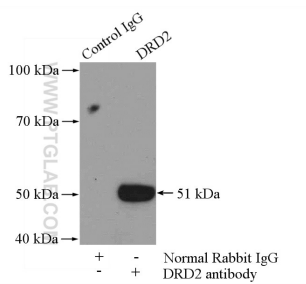
For technical support and original validation data for this product please contact:

T: 1 (888) 4PTGLAB (1-888-478-4522) (toll free in USA), or 1(312) 455-8498 (outside USA)

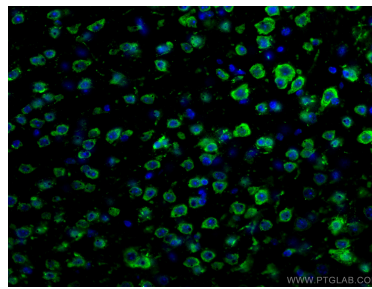
E: [proteintech@ptglab.com](mailto:proteintech@ptglab.com)  
W: [ptglab.com](http://ptglab.com)

This product is exclusively available under Proteintech Group brand and is not available to purchase from any other manufacturer.

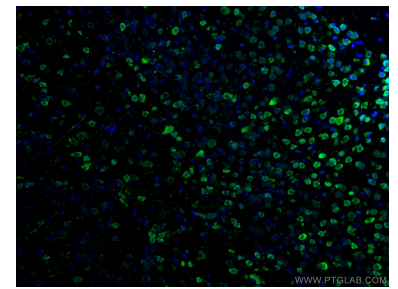
## Selected Validation Data



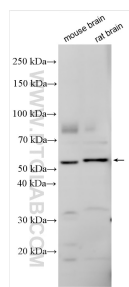
IP result of anti-DRD2 (IP:55084-1-AP, 4 $\mu$ g; Detection:55084-1-AP 1:300) with SH-SY5Y cells lysate 3000 $\mu$ g. This data was developed using the same antibody clone with 55084-1-PBS in a different storage buffer formulation.



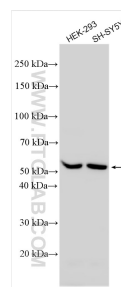
Immunofluorescent analysis of (4% PFA) fixed mouse brain tissue using DRD2 antibody (55084-1-AP) at dilution of 1:200 and CoraLite@488-Conjugated AffiniPure Goat Anti-Rabbit IgG(H+L). This data was developed using the same antibody clone with 55084-1-PBS in a different storage buffer formulation.



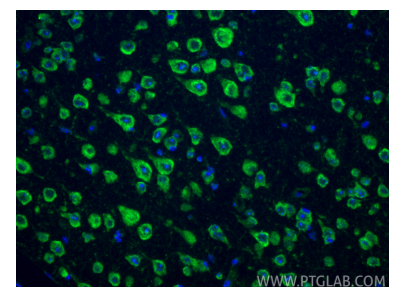
Immunofluorescent analysis of (4% PFA) fixed mouse brain tissue using DRD2 antibody (55084-1-AP) at dilution of 1:200 and CoraLite@488-Conjugated AffiniPure Goat Anti-Rabbit IgG(H+L). This data was developed using the same antibody clone with 55084-1-PBS in a different storage buffer formulation.



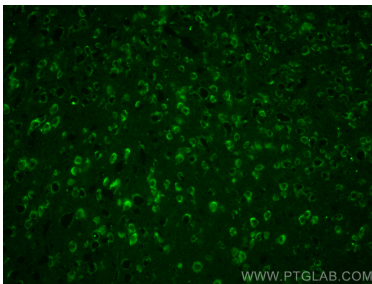
Various lysates were subjected to SDS PAGE followed by western blot with 55084-1-AP (DRD2 antibody) at dilution of 1:2000 incubated at room temperature for 1.5 hours. This data was developed using the same antibody clone with 55084-1-PBS in a different storage buffer formulation.



Various lysates were subjected to SDS PAGE followed by western blot with 55084-1-AP (DRD2 antibody) at dilution of 1:2000 incubated at room temperature for 1.5 hours. This data was developed using the same antibody clone with 55084-1-PBS in a different storage buffer formulation.



Immunofluorescent analysis of (4% PFA) fixed paraffin-embedded mouse brain tissue using DRD2 antibody (55084-1-AP) at dilution of 1:200 and CoraLite@488-Conjugated AffiniPure Goat Anti-Rabbit IgG(H+L) (SA00013-2). Heat mediated antigen retrieval with Tris-EDTA buffer (pH 9.0). This data was developed using the same antibody clone with 55084-1-PBS in a different storage buffer formulation.



Immunofluorescent analysis of (4% PFA) fixed frozen OCT-embedded mouse brain tissue using 55084-1-AP (DRD2 antibody) at dilution of 1:200 and CoraLite@488-Conjugated AffiniPure Goat Anti-Rabbit IgG(H+L). This data was developed using the same antibody clone with 55084-1-PBS in a different storage buffer formulation.