

For Research Use Only

# PTCH2 Polyclonal antibody

Catalog Number: 55091-1-AP **3 Publications**



## Basic Information

|  |   |  |
|--|---|--|
| <b>Catalog Number:</b><br>55091-1-AP   | <b>GenBank Accession Number:</b><br>NM_003738       | <b>Purification Method:</b><br>Antigen affinity purification |
| <b>Size:</b><br>150ul , Concentration: 300 µg/ml by Nanodrop and 300 µg/ml by Bradford method using BSA as the standard; | <b>GeneID (NCBI):</b><br>8643                       | <b>Recommended Dilutions:</b><br>WB 1:500-1:1000             |
| <b>Source:</b><br>Rabbit   | <b>Full Name:</b><br>patched homolog 2 (Drosophila) |  |
| <b>Isotype:</b><br>IgG   | <b>Calculated MW:</b><br>131 kDa                    |  |
|  | <b>Observed MW:</b><br>131-140 kDa                  |  |

## Applications

|  |   |
|--|---|
| <b>Tested Applications:</b><br>WB, ELISA         | <b>Positive Controls:</b><br>WB : HepG2 cells, human brain tissue |
| <b>Cited Applications:</b><br>WB                 |   |
| <b>Species Specificity:</b><br>human, mouse, rat |   |
| <b>Cited Species:</b><br>human, rat, mouse       |   |

## Background Information

PTCH1 (patched homolog 1) and PTCH2 are twelve-pass transmembrane proteins that act receptors of Hedgehog signaling pathway (PMID: 8906794; 9811851). Signals of Hedgehog family proteins (SHH, IHH and DHH in humans) are transduced through Patched family receptors (PTCH1 and PTCH2) and Smoothened (SMO) to GLI family transcription factors. Hedgehog pathway plays a critical role in embryonic development and tissue homeostasis, and its dysregulation has been implicated in many human diseases including congenital disorder and cancer (PMID: 23719536; 23532857). PTCH2 may function as a tumor suppressor in the Hedgehog signaling pathway. Alterations in PTCH2 gene have been associated with nevoid basal cell carcinoma syndrome, basal cell carcinoma, medulloblastoma, and susceptibility to congenital macrostomia. This antibody is specific to PTCH2.

## Notable Publications

| Author        | Pubmed ID | Journal     | Application |
|---------------|-----------|-------------|-------------|
| Xin Chen      | 35028532  | iScience    | WB          |
| Ya-Dong Zhang | 29244790  | Exp Mol Med | WB          |
| Qiuyao Wu     | 37142671  | Cell Res    | WB          |

## Storage

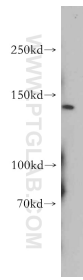
**Storage:**  
Store at -20°C. Stable for one year after shipment.  
**Storage Buffer:**  
PBS with 0.02% sodium azide and 50% glycerol pH 7.3.  
Aliquoting is unnecessary for -20°C storage

\*\*\* 20ul sizes contain 0.1% BSA

For technical support and original validation data for this product please contact:  
T: 1 (888) 4PTGLAB (1-888-478-4522) (toll free in USA), or 1(312) 455-8498 (outside USA) E: proteintech@ptglab.com W: ptglab.com

This product is exclusively available under Proteintech Group brand and is not available to purchase from any other manufacturer.

## Selected Validation Data



HepG2 cells were subjected to SDS PAGE followed by western blot with 55091-1-AP (PTCH2 antibody) at dilution of 1:500 incubated at room temperature for 1.5 hours.