

For Research Use Only

# PTCH2 Polyclonal antibody, PBS Only

Catalog Number:55091-1-PBS



## Basic Information

**Catalog Number:**

55091-1-PBS

**Size:**

100ug , Concentration: 1 mg/ml by Nanodrop;

**Source:**

Rabbit

**Isotype:**

IgG

**GenBank Accession Number:**

NM\_003738

**GeneID (NCBI):**

8643

**UNIPROT ID:**

Q9Y6C5

**Full Name:**

patched homolog 2 (Drosophila)

**Calculated MW:**

131 kDa

**Observed MW:**

131-140 kDa

**Purification Method:**

Antigen affinity purification

## Applications

**Tested Applications:**

WB, Indirect ELISA

**Species Specificity:**

human, mouse, rat

## Background Information

PTCH1 (patched homolog 1) and PTCH2 are twelve-pass transmembrane proteins that act receptors of Hedgehog signaling pathway (PMID: 8906794; 9811851). Signals of Hedgehog family proteins (SHH, IHH and DHH in humans) are transduced through Patched family receptors (PTCH1 and PTCH2) and Smoothened (SMO) to GLI family transcription factors. Hedgehog pathway plays a critical role in embryonic development and tissue homeostasis, and its dysregulation has been implicated in many human diseases including congenital disorder and cancer (PMID: 23719536; 23532857). PTCH2 may function as a tumor suppressor in the Hedgehog signaling pathway. Alterations in PTCH2 gene have been associated with nevoid basal cell carcinoma syndrome, basal cell carcinoma, medulloblastoma, and susceptibility to congenital macrostomia. This antibody is specific to PTCH2.

## Storage

**Storage:**

Store at -80°C.

**Storage Buffer:**

PBS only, pH7.3

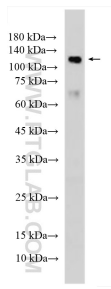
For technical support and original validation data for this product please contact:

T: 1 (888) 4PTGLAB (1-888-478-4522) (toll free in USA), or 1(312) 455-8498 (outside USA)

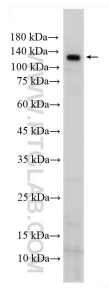
E: [proteintech@ptglab.com](mailto:proteintech@ptglab.com)  
W: [ptglab.com](http://ptglab.com)

**This product is exclusively available under Proteintech Group brand and is not available to purchase from any other manufacturer.**

## Selected Validation Data



Mouse liver tissue lysate was subjected to SDS PAGE followed by western blot with 55091-1-AP (PTCH2 antibody) at dilution of 1:500 incubated at room temperature for 1.5 hours. This data was developed using the same antibody clone with 55091-1-PBS in a different storage buffer formulation.



Rat liver tissue lysate was subjected to SDS PAGE followed by western blot with 55091-1-AP (PTCH2 antibody) at dilution of 1:500 incubated at room temperature for 1.5 hours. This data was developed using the same antibody clone with 55091-1-PBS in a different storage buffer formulation.