

For Research Use Only

MAGEA1 Polyclonal antibody

Catalog Number: 55105-1-AP



Basic Information

Catalog Number: 55105-1-AP	GenBank Accession Number: NM_004988	Purification Method: Antigen affinity purification
Size: 150ul , Concentration: 160 µg/ml by Nanodrop and 133 µg/ml by Bradford method using BSA as the standard;	GeneID (NCBI): 4100	Recommended Dilutions: WB 1:500-1:1000 IF 1:20-1:200
Source: Rabbit	Full Name: melanoma antigen family A, 1 (directs expression of antigen MZ2-E)	
Isotype: IgG	Calculated MW: 34 kDa	
	Observed MW: 46 kDa	

Applications

Tested Applications: IF, WB, ELISA	Positive Controls: WB : A375 cells, MCF-7 cells
Species Specificity: human	IF : A375 cells,

Background Information

MAGEA1, also named as CT1.1, MZ2-E, MAGE1 and MAGE1A, is the first gene reported to encode a CTL-defined human tumor antigen. It may play a role in embryonal development and tumor transformation or aspects of tumor progression. Antigen recognized on a melanoma by autologous cytolytic T-lymphocytes. MAGEA1 provided direct evidence for the power of the cDNA expression library as an effective strategy to identify genes encoding tumor antigens recognized by HLA-restricted T cells.(PMID:16951217) The antibody is specific to MAGEA1.

Storage

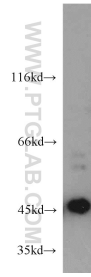
Storage:
Store at -20°C.
Storage Buffer:
PBS with 0.02% sodium azide and 50% glycerol pH 7.3.
Aliquoting is unnecessary for -20°C storage

*** 20ul sizes contain 0.1% BSA

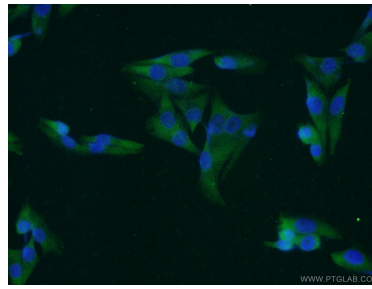
For technical support and original validation data for this product please contact:
T: 1 (888) 4PTGLAB (1-888-478-4522) (toll free in USA), or 1(312) 455-8498 (outside USA)
E: proteintech@ptglab.com
W: ptglab.com

This product is exclusively available under Proteintech Group brand and is not available to purchase from any other manufacturer.

Selected Validation Data



A375 cells were subjected to SDS PAGE followed by western blot with 55105-1-AP (MAGEA1 antibody) at dilution of 1:200 incubated at room temperature for 1.5 hours.



Immunofluorescent analysis of A375 cells using 55105-1-AP (MAGEA1 antibody) at dilution of 1:50 and Alexa Fluor 488-conjugated AffiniPure Goat Anti-Rabbit IgG(H+L).