

For Research Use Only

ATP13A3 Polyclonal antibody

Catalog Number: 55108-1-AP



Basic Information

Catalog Number:

55108-1-AP

Size:

150ul, Concentration: 1600 ug/ml by Nanodrop;

Source:

Rabbit

Isotype:

IgG

GenBank Accession Number:

NM_024524

GeneID (NCBI):

79572

UNIPROT ID:

Q9H7F0

Full Name:

ATPase type 13A3

Calculated MW:

138 kDa

Observed MW:

78 kDa

Purification Method:

Antigen affinity purification

Recommended Dilutions:

WB 1:500-1:2000

Applications

Tested Applications:

WB, ELISA

Species Specificity:

human

Positive Controls:

WB : BxPC-3 cells, MCF-7 cells

Background Information

ATP13A3 is a member of the P-type ATPase family of proteins that transport a variety of cations across membranes. ATP13A3 is a novel member of the enigmatic mammalian PTS that contributes to cellular polyamine uptake and is implicated in disease (PMID: 33310703). Mutations in ATP13A3 cause Primary Pulmonary Hypertension 5 (PMID: 30679663, 34493544). ATP13A3 can be detected as 78 kDa representing a truncated isoform of ATP13A3 as reported (PMID: 35260637).

Storage

Storage:

Store at -20°C. Stable for one year after shipment.

Storage Buffer:

0.1M NaHCO₃, 0.1M glycine, 0.02% sodium azide and 50% glycerol pH 7.3.

Aliquoting is unnecessary for -20°C storage

*** 20ul sizes contain 0.1% BSA

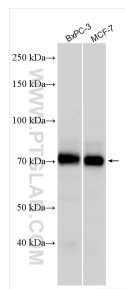
For technical support and original validation data for this product please contact:

T: 1 (888) 4PTGLAB (1-888-478-4522) (toll free in USA), or 1(312) 455-8498 (outside USA)

E: proteintech@ptglab.com
W: ptglab.com

This product is exclusively available under Proteintech Group brand and is not available to purchase from any other manufacturer.

Selected Validation Data



Various lysates were subjected to SDS PAGE followed by western blot with 55108-1-AP (ATP13A3 antibody) at dilution of 1:1000 incubated at room temperature for 1.5 hours.