

For Research Use Only

MAGEA4 Polyclonal antibody

Catalog Number: 55109-1-AP



Basic Information

Catalog Number: 55109-1-AP	GenBank Accession Number: NM_001011548	Purification Method: Antigen affinity purification
Size: 150ul , Concentration: 400 µg/ml by Nanodrop and 400 µg/ml by Bradford method using BSA as the standard;	GeneID (NCBI): 4103	Recommended Dilutions: WB 1:500-1:1000 IHC 1:20-1:200
Source: Rabbit	Full Name: melanoma antigen family A, 4	
Isotype: IgG	Calculated MW: 35 kDa	
	Observed MW: 35-40 kDa	

Applications

Tested Applications: IHC, WB, ELISA	Positive Controls: WB : human placenta tissue, A375 cells IHC : human breast cancer tissue,
Species Specificity: human	
Note-IHC: suggested antigen retrieval with TE buffer pH 9.0; (*) Alternatively, antigen retrieval may be performed with citrate buffer pH 6.0	

Background Information

MAGEA4, also named as MAGE4 and CT1.4, is one of the germ cell-specific markers (PMID:16540528). SMAGEA4 is one of subgroup I MAGEAs members which may play important roles in the immune surveillance of certain tumor types and play important roles during embryogenesis.(PMID:15222021) The antibody is specific to MAGEA4.

Storage

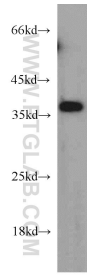
Storage:
Store at -20°C.
Storage Buffer:
PBS with 0.02% sodium azide and 50% glycerol pH 7.3.
Aliquoting is unnecessary for -20°C storage

*** 20ul sizes contain 0.1% BSA

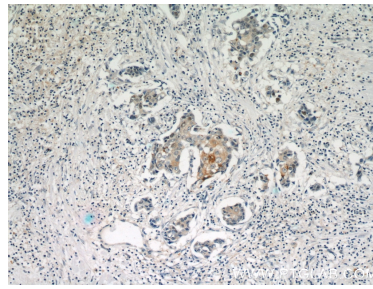
For technical support and original validation data for this product please contact:
T: 1 (888) 4PTGLAB (1-888-478-4522) (toll free in USA), or 1(312) 455-8498 (outside USA)
E: proteintech@ptglab.com
W: ptglab.com

This product is exclusively available under Proteintech Group brand and is not available to purchase from any other manufacturer.

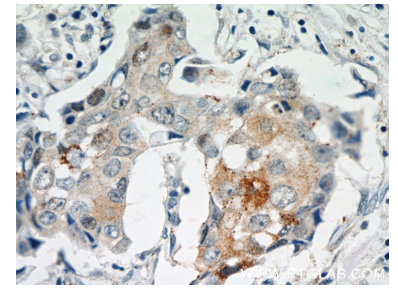
Selected Validation Data



human placenta tissue were subjected to SDS PAGE followed by western blot with 55109-1-AP (MAGEA4 antibody) at dilution of 1:300 incubated at room temperature for 1.5 hours.



Immunohistochemical analysis of paraffin-embedded human breast cancer using 55109-1-AP (MAGEA4 antibody) at dilution of 1:50 (under 10x lens).



Immunohistochemical analysis of paraffin-embedded human breast cancer using 55109-1-AP (MAGEA4 antibody) at dilution of 1:50 (under 40x lens).