

For Research Use Only

INSRR Polyclonal antibody

Catalog Number: 55112-1-AP



Basic Information

Catalog Number: 55112-1-AP	GenBank Accession Number: NM_014215	Purification Method: Antigen affinity purification
Size: 150ul , Concentration: 400 µg/ml by Nanodrop and 227 µg/ml by Bradford method using BSA as the standard;	GeneID (NCBI): 3645	Recommended Dilutions: WB 1:500-1:2000
Source: Rabbit	Full Name: IR related receptor	
Isotype: IgG	Calculated MW: 144 kDa	
	Observed MW: 150-155 kDa	

Applications

Tested Applications: WB,ELISA	Positive Controls: WB : mouse kidney tissue, human brain tissue
Species Specificity: human, mouse, rat	

Background Information

INSRR, also named as IRR, belongs to the protein kinase superfamily, Tyr protein kinase family and INS receptor subfamily. It probably binds an INS related protein and has a tyrosine-protein kinase activity. It phosphorylates the INS receptor substrates IRS-1 and IRS-2. INSRR is a heterotetrameric transmembrane receptor composed of two alpha and two beta chains linked by disulfide bonds. INSRR shares high homology with the INS (IR) and the IGF-1R, but doesn't bind any of IR and IGF-1R known ligands. The antibody is specific to INSRR.

Storage

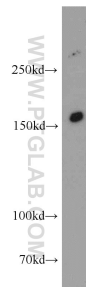
Storage:
Store at -20°C.
Storage Buffer:
PBS with 0.02% sodium azide and 50% glycerol pH 7.3.
Aliquoting is unnecessary for -20°C storage

*** 20ul sizes contain 0.1% BSA

For technical support and original validation data for this product please contact:
T: 1 (888) 4PTGLAB (1-888-478-4522) (toll free in USA), or 1(312) 455-8498 (outside USA) E: proteintech@ptglab.com W: ptglab.com

This product is exclusively available under Proteintech Group brand and is not available to purchase from any other manufacturer.

Selected Validation Data



mouse kidney tissue were subjected to SDS PAGE followed by western blot with 55112-1-AP (INSRR antibody) at dilution of 1:500 incubated at room temperature for 1.5 hours.