

For Research Use Only

# CD336 Polyclonal antibody

Catalog Number: 55118-1-AP



## Basic Information

<b>Catalog Number:</b> 55118-1-AP	<b>GenBank Accession Number:</b> NM_004828	<b>Purification Method:</b> Antigen affinity purification
<b>Size:</b> 150ul , Concentration: 650 µg/ml by Nanodrop and 307 µg/ml by Bradford method using BSA as the standard;	<b>GeneID (NCBI):</b> 9436	<b>Recommended Dilutions:</b> WB 1:500-1:1000
<b>Source:</b> Rabbit	<b>Full Name:</b> natural cytotoxicity triggering receptor 2	
<b>Isotype:</b> IgG	<b>Calculated MW:</b> 31 kDa	
	<b>Observed MW:</b> 36-44 kDa	

## Applications

<b>Tested Applications:</b> WB, ELISA	<b>Positive Controls:</b> WB : human spleen tissue,
<b>Species Specificity:</b> human	

## Background Information

CD336, also named as NCR2, LY95 and NKp44, belongs to the natural cytotoxicity receptor (NCR) family. It is cytotoxicity-activating receptor that may contribute to the increased efficiency of activated natural killer (NK) cells to mediate tumor cell lysis. It is expressed on activated human NK cells. CD336 displays a single extracellular Ig-like V domain and a transmembrane portion containing the charged residue (Lysine), likely involved in the association with KARAP/DAP12 molecules. The antibody is specific to CD336.

## Storage

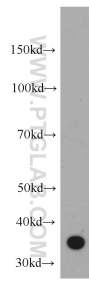
**Storage:**  
Store at -20°C.  
**Storage Buffer:**  
PBS with 0.02% sodium azide and 50% glycerol pH 7.3.  
Aliquoting is unnecessary for -20°C storage

\*\*\* 20ul sizes contain 0.1% BSA

For technical support and original validation data for this product please contact:  
T: 1 (888) 4PTGLAB (1-888-478-4522) (toll free in USA), or 1(312) 455-8498 (outside USA) E: proteintech@ptglab.com W: ptglab.com

This product is exclusively available under Proteintech Group brand and is not available to purchase from any other manufacturer.

## Selected Validation Data



human spleen tissue were subjected to SDS PAGE followed by western blot with 55118-1-AP (CD336 antibody) at dilution of 1:500 incubated at room temperature for 1.5 hours.