

For Research Use Only

WEE2 Polyclonal antibody

Catalog Number: 55119-1-AP



Basic Information

Catalog Number:

55119-1-AP

Size:

150ul , Concentration: 400 ug/ml by Nanodrop and 473 ug/ml by Bradford method using BSA as the standard;

Source:

Rabbit

Isotype:

IgG

GenBank Accession Number:

NM_001105558

GeneID (NCBI):

494551

UNIPROT ID:

POC1S8

Full Name:

WEE1 homolog 2 (S. pombe)

Calculated MW:

63 kDa

Observed MW:

63-66 kDa

Purification Method:

Antigen affinity purification

Recommended Dilutions:

WB 1:500-1:1000

Applications

Tested Applications:

WB, ELISA

Species Specificity:

human

Positive Controls:

WB : Jurkat cells, human ovary tissue

Background Information

WEE2, also named as WEE1B, belongs to the protein kinase superfamily. Ser/Thr protein kinase family and WEE1 subfamily. It phosphorylates and inhibits CDK1. WEE2 may act as a negative regulator of entry into mitosis (G2 to M transition). WEE2 is conserved from yeast to humans. The aim of the present study was to determine the spatiotemporal expression pattern and the function of WEE2 during oocyte maturation in a nonhuman primate species, the rhesus macaque. Taking the long double-stranded RNA-mediated RNA interference approach, down-regulation of WEE2 led to meiotic resumption in a subset of GV oocytes even in the presence of a phosphodiesterase 3 inhibitor. Overexpression of WEE2 delays the reentry of oocytes into meiosis in both mice and monkeys. WEE2 is a conserved oocyte-specific meiosis inhibitor that functions downstream of cAMP in nonhuman primates. (PMID: 20200212) The antibody is specific to WEE2.

Storage

Storage:

Store at -20°C.

Storage Buffer:

0.1M NaHCO₃, 0.1M glycine, 0.02% sodium azide and 50% glycerol pH 7.3.

Aliquoting is unnecessary for -20°C storage

*** 20ul sizes contain 0.1% BSA

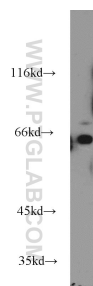
For technical support and original validation data for this product please contact:

T: 1 (888) 4PTGLAB (1-888-478-4522) (toll free in USA), or 1(312) 455-8498 (outside USA)

E: proteintech@ptglab.com
W: ptglab.com

This product is exclusively available under Proteintech Group brand and is not available to purchase from any other manufacturer.

Selected Validation Data



Jurkat cells were subjected to SDS PAGE followed by western blot with 55119-1-AP (WEE2 antibody) at dilution of 1:500 incubated at room temperature for 1.5 hours.