

For Research Use Only

# PSAPL1 Polyclonal antibody

Catalog Number: 55128-1-AP



## Basic Information

**Catalog Number:**

55128-1-AP

**Size:**

150ul , Concentration: 493 ug/ml by Bradford method using BSA as the standard;

**Source:**

Rabbit

**Isotype:**

IgG

**GenBank Accession Number:**

NM\_001085382

**GeneID (NCBI):**

768239

**UNIPROT ID:**

Q6NUJ1

**Full Name:**

prosaposin-like 1

**Calculated MW:**

57 kDa

**Observed MW:**

57-63 kDa

**Purification Method:**

Antigen affinity purification

**Recommended Dilutions:**

WB 1:500-1:1000

IHC 1:50-1:500

IF/ICC 1:50-1:500

## Applications

**Tested Applications:**

WB, IHC, IF/ICC, ELISA

**Species Specificity:**

human

**Note-IHC: suggested antigen retrieval with TE buffer pH 9.0; (\*) Alternatively, antigen retrieval may be performed with citrate buffer pH 6.0**

**Positive Controls:**

WB : human testis tissue, multi-cells/tissue

IHC : human stomach cancer tissue,

IF/ICC : HepG2 cells,

## Background Information

PSAPL1 is a protein like PSAP. It can be cleaved to be 5 chains: Saposin A-like, Saposin B-Val-like, Saposin B-like, Saposin C-like and Saposin D-like. PSAPL1 may activate the lysosomal degradation of sphingolipids. The antibody is specific to PSAPL1.

## Storage

**Storage:**

Store at -20°C. Stable for one year after shipment.

**Storage Buffer:**

PBS with 0.02% sodium azide and 50% glycerol pH 7.3.

Aliquoting is unnecessary for -20°C storage

\*\*\* 20ul sizes contain 0.1% BSA

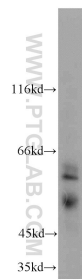
For technical support and original validation data for this product please contact:

T: 1 (888) 4PTGLAB (1-888-478-4522) (toll free in USA), or 1(312) 455-8498 (outside USA)

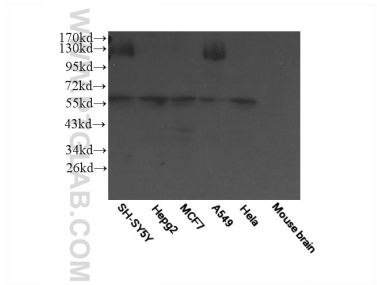
E: [proteintech@ptglab.com](mailto:proteintech@ptglab.com)  
W: [ptglab.com](http://ptglab.com)

This product is exclusively available under Proteintech Group brand and is not available to purchase from any other manufacturer.

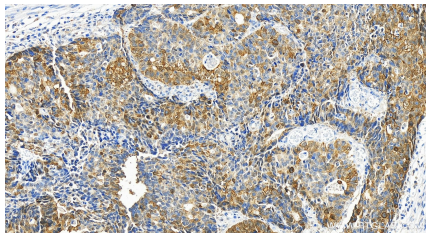
Selected Validation Data



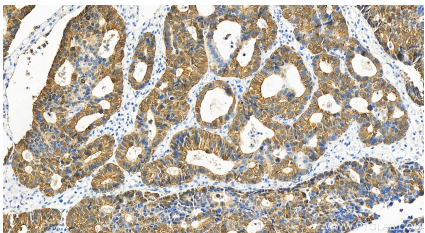
human testis tissue were subjected to SDS PAGE followed by western blot with 55128-1-AP (PSAPL1 antibody) at dilution of 1:200 incubated at room temperature for 1.5 hours.



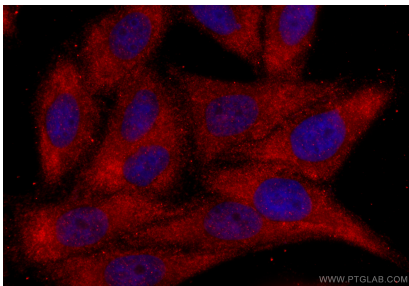
WB result of 55128-1-AP.



Immunohistochemical analysis of paraffin-embedded human stomach cancer tissue slide using 55128-1-AP (PSAPL1 antibody) at dilution of 1:200 (under 20x lens). Heat mediated antigen retrieval with Tris-EDTA buffer (pH 9.0).



Immunohistochemical analysis of paraffin-embedded human stomach cancer tissue slide using 55128-1-AP (PSAPL1 antibody) at dilution of 1:200 (under 20x lens). Heat mediated antigen retrieval with Tris-EDTA buffer (pH 9.0).



Immunofluorescent analysis of (-20°C Ethanol) fixed HepG2 cells using PSAPL1 antibody (55128-1-AP) at dilution of 1:200 and CoraLite®594-Conjugated Goat Anti-Rabbit IgG(H+L) (SA00013-4).