

For Research Use Only

# PSAPL1 Polyclonal antibody, PBS Only

Catalog Number: 55128-1-PBS



## Basic Information

Catalog Number:

55128-1-PBS

Size:

100ug, Concentration: 1 mg/ml by  
Nanodrop;

Source:

Rabbit

Isotype:

IgG

GenBank Accession Number:

NM\_001085382

GeneID (NCBI):

768239

UNIPROT ID:

Q6NUJ1

Full Name:

prosaposin-like 1

Calculated MW:

57 kDa

Observed MW:

57-63 kDa

Purification Method:

Antigen affinity purification

## Applications

Tested Applications:

WB, IHC, IF/ICC, Indirect ELISA

Species Specificity:

human

## Background Information

PSAPL1 is a protein like PSAP. It can be cleaved to be 5 chains: Saposin A-like, Saposin B-Val-like, Saposin B-like, Saposin C-like and Saposin D-like. PSAPL1 may activate the lysosomal degradation of sphingolipids. The antibody is specific to PSAPL1.

## Storage

Storage:

Store at -80°C.

Storage Buffer:

PBS Only

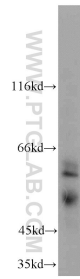
For technical support and original validation data for this product please contact:

T: 1 (888) 4PTGLAB (1-888-478-4522) (toll free  
in USA), or 1(312) 455-8498 (outside USA)

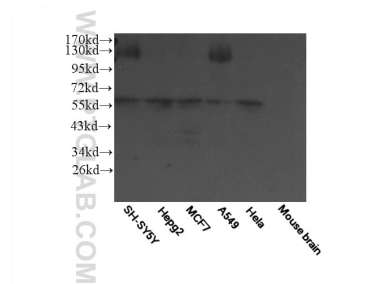
E: [proteintech@ptglab.com](mailto:proteintech@ptglab.com)  
W: [ptglab.com](http://ptglab.com)

This product is exclusively available under Proteintech Group brand and is not available to purchase from any other manufacturer.

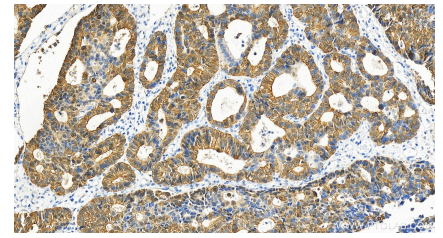
## Selected Validation Data



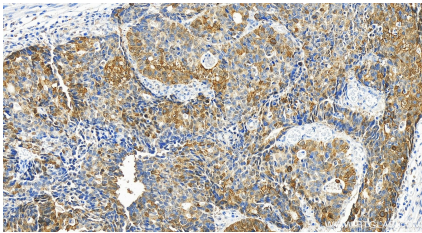
human testis tissue were subjected to SDS PAGE followed by western blot with 55128-1-AP (PSAPL1 antibody) at dilution of 1:200 incubated at room temperature for 1.5 hours. This data was developed using the same antibody clone with 55128-1-PBS in a different storage buffer formulation.



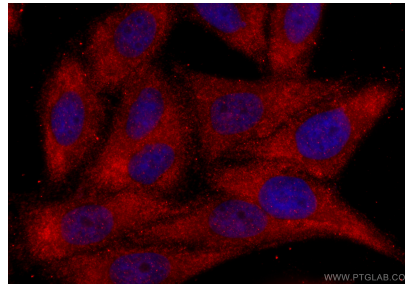
WB result of 55128-1-AP. This data was developed using the same antibody clone with 55128-1-PBS in a different storage buffer formulation.



Immunohistochemical analysis of paraffin-embedded human stomach cancer tissue slide using 55128-1-AP (PSAPL1 antibody) at dilution of 1:200 (under 20x lens). Heat mediated antigen retrieval with Tris-EDTA buffer (pH 9.0). This data was developed using the same antibody clone with 55128-1-PBS in a different storage buffer formulation.



Immunohistochemical analysis of paraffin-embedded human stomach cancer tissue slide using 55128-1-AP (PSAPL1 antibody) at dilution of 1:200 (under 20x lens). Heat mediated antigen retrieval with Tris-EDTA buffer (pH 9.0). This data was developed using the same antibody clone with 55128-1-PBS in a different storage buffer formulation.



Immunofluorescent analysis of (-20°C Ethanol) fixed HepG2 cells using PSAPL1 antibody (55128-1-AP) at dilution of 1:200 and CoraLite®594-Conjugated Goat Anti-Rabbit IgG(H+L) (SA00013-4). This data was developed using the same antibody clone with 55128-1-PBS in a different storage buffer formulation.