

For Research Use Only

CD30/TNFRSF8 Polyclonal antibody

Catalog Number: 55132-1-AP



Basic Information

Catalog Number:

55132-1-AP

Size:

150ul, Concentration: 200 ug/ml by Nanodrop and 133 ug/ml by Bradford method using BSA as the standard;

Source:

Rabbit

Isotype:

IgG

GenBank Accession Number:

NM_001243

GeneID (NCBI):

943

UNIPROT ID:

P28908

Full Name:

tumor necrosis factor receptor superfamily, member 8

Calculated MW:

64 kDa

Purification Method:

Antigen affinity purification

Recommended Dilutions:

IHC 1:500-1:2000

IF-P 1:50-1:500

Applications

Tested Applications:

IHC, IF-P, ELISA

Species Specificity:

human

Positive Controls:

IHC : human lymphoma tissue, human tonsillitis tissue

IF-P : human lymphoma tissue,

Note-IHC: suggested antigen retrieval with TE buffer pH 9.0; (*) Alternatively, antigen retrieval may be performed with citrate buffer pH 6.0

Background Information

CD30, also known as TNFRSF8 or Ki-1, is a transmembrane glycoprotein belonging to the tumor necrosis factor receptor superfamily. It is composed of an extracellular domain with six cysteine-rich repeats, a transmembrane segment, and an intracellular domain (PMID: 1310894). CD30 is expressed on a small subset of activated T and B lymphocytes, and a variety of lymphoid neoplasms, with the highest expression in classical Hodgkin's lymphoma and anaplastic large cell lymphoma (PMID: 9826579; 28885612). The CD30 ligand (CD30L or CD153) is a type II transmembrane glycoprotein of the tumor necrosis factor ligand superfamily (PMID: 8701986). Signal transduction of CD30/CD30L utilizes signal transducers, TNFR-associated factors (TRAF 1, 2, 3 and 5) (PMID: 9826579).

Storage

Storage:

Store at -20°C. Stable for one year after shipment.

Storage Buffer:

0.1M NaHCO₃, 0.1M glycine, 0.02% sodium azide and 50% glycerol pH 7.3.

Aliquoting is unnecessary for -20°C storage

*** 20ul sizes contain 0.1% BSA

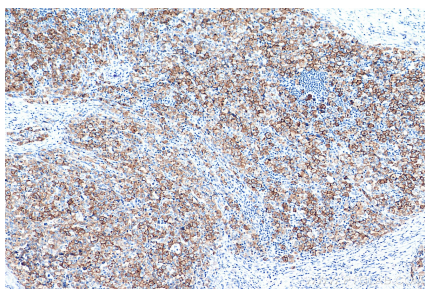
For technical support and original validation data for this product please contact:

T: 1 (888) 4PTGLAB (1-888-478-4522) (toll free in USA), or 1(312) 455-8498 (outside USA)

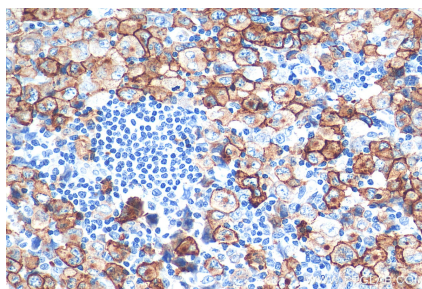
E: proteintech@ptglab.com
W: ptglab.com

This product is exclusively available under Proteintech Group brand and is not available to purchase from any other manufacturer.

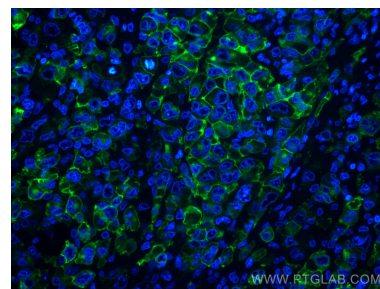
Selected Validation Data



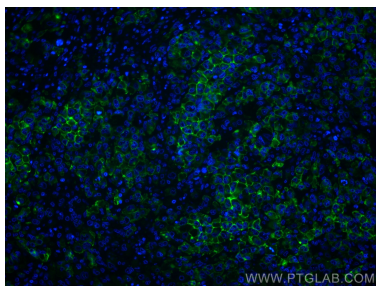
Immunohistochemical analysis of paraffin-embedded human T-cell anaplastic large cell lymphoma (ALCL) tissue slide using 55132-1-AP (CD30 antibody) at dilution of 1:1000 (under 10x lens). Heat mediated antigen retrieval with Tris-EDTA buffer (pH 9.0).



Immunohistochemical analysis of paraffin-embedded human T-cell anaplastic large cell lymphoma (ALCL) tissue slide using 55132-1-AP (CD30 antibody) at dilution of 1:1000 (under 40x lens). Heat mediated antigen retrieval with Tris-EDTA buffer (pH 9.0).



Immunofluorescent analysis of (4% PFA) fixed human T-cell anaplastic large cell lymphoma (ALCL) tissue using CD30 antibody (55132-1-AP) at dilution of 1:200 and CoraLite®488-Conjugated AffiniPure Goat Anti-Rabbit IgG(H+L).



Immunofluorescent analysis of (4% PFA) fixed human T-cell anaplastic large cell lymphoma (ALCL) tissue using CD30 antibody (55132-1-AP) at dilution of 1:200 and CoraLite®488-Conjugated AffiniPure Goat Anti-Rabbit IgG(H+L).