

For Research Use Only

# CD30/TNFRSF8 Polyclonal antibody, PBS Only

Catalog Number: 55132-1-PBS



## Basic Information

**Catalog Number:**

55132-1-PBS

**Size:**

100ug, Concentration: 1 mg/ml by  
Nanodrop;

**Source:**

Rabbit

**Isotype:**

IgG

**GenBank Accession Number:**

NM\_001243

**GeneID (NCBI):**

943

**UNIPROT ID:**

P28908

**Full Name:**

tumor necrosis factor receptor  
superfamily, member 8

**Calculated MW:**

64 kDa

**Purification Method:**

Antigen affinity purification

## Applications

**Tested Applications:**

IHC, IF-P, Indirect ELISA

**Species Specificity:**

human

## Background Information

CD30, also known as TNFRSF8 or Ki-1, is a transmembrane glycoprotein belonging to the tumor necrosis factor receptor superfamily. It is composed of an extracellular domain with six cysteine-rich repeats, a transmembrane segment, and an intracellular domain (PMID: 1310894). CD30 is expressed on a small subset of activated T and B lymphocytes, and a variety of lymphoid neoplasms, with the highest expression in classical Hodgkin's lymphoma and anaplastic large cell lymphoma (PMID: 9826579; 28885612). The CD30 ligand (CD30L or CD153) is a type II transmembrane glycoprotein of the tumor necrosis factor ligand superfamily (PMID: 8701986). Signal transduction of CD30/CD30L utilizes signal transducers, TNFR-associated factors (TRAF1, 2, 3 and 5) (PMID: 9826579).

## Storage

**Storage:**

Store at -80°C.

**Storage Buffer:**

PBS Only

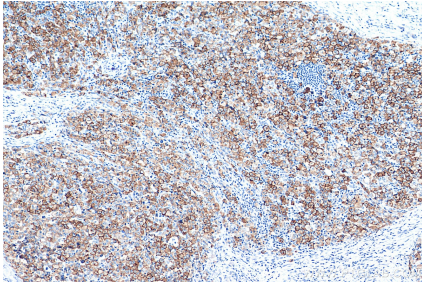
For technical support and original validation data for this product please contact:

T: 1 (888) 4PTGLAB (1-888-478-4522) (toll free  
in USA), or 1(312) 455-8498 (outside USA)

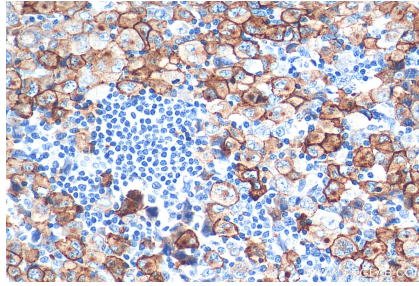
E: [proteintech@ptglab.com](mailto:proteintech@ptglab.com)  
W: [ptglab.com](http://ptglab.com)

This product is exclusively available under Proteintech Group brand and is not available to purchase from any other manufacturer.

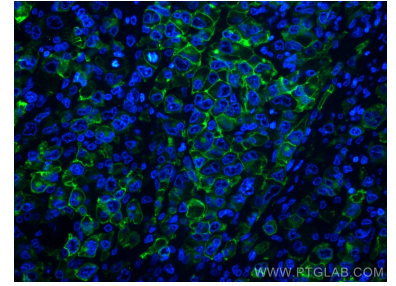
## Selected Validation Data



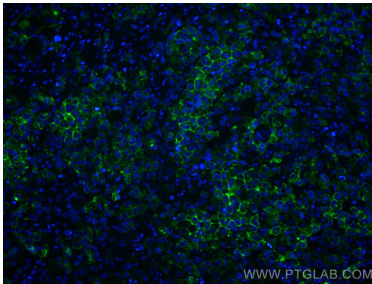
Immunohistochemical analysis of paraffin-embedded human T-cell anaplastic large cell lymphoma (ALCL) tissue slide using 55132-1-AP (CD30 antibody) at dilution of 1:1000 (under 10x lens). Heat mediated antigen retrieval with Tris-EDTA buffer (pH 9.0). This data was developed using the same antibody clone with 55132-1-PBS in a different storage buffer formulation.



Immunohistochemical analysis of paraffin-embedded human T-cell anaplastic large cell lymphoma (ALCL) tissue slide using 55132-1-AP (CD30 antibody) at dilution of 1:1000 (under 40x lens). Heat mediated antigen retrieval with Tris-EDTA buffer (pH 9.0). This data was developed using the same antibody clone with 55132-1-PBS in a different storage buffer formulation.



Immunofluorescent analysis of (4% PFA) fixed human T-cell anaplastic large cell lymphoma (ALCL) tissue using CD30 antibody (55132-1-AP) at dilution of 1:200 and CoraLite@488-Conjugated AffiniPure Goat Anti-Rabbit IgG(H+L). This data was developed using the same antibody clone with 55132-1-PBS in a different storage buffer formulation.



Immunofluorescent analysis of (4% PFA) fixed human T-cell anaplastic large cell lymphoma (ALCL) tissue using CD30 antibody (55132-1-AP) at dilution of 1:200 and CoraLite@488-Conjugated AffiniPure Goat Anti-Rabbit IgG(H+L). This data was developed using the same antibody clone with 55132-1-PBS in a different storage buffer formulation.