

For Research Use Only

S1PR1/EDG1 Polyclonal antibody

Catalog Number: 55133-1-AP

Featured Product

43 Publications



Basic Information

Catalog Number:

55133-1-AP

Size:

150ul, Concentration: 1000 ug/ml by Nanodrop;

Source:

Rabbit

Isotype:

IgG

GenBank Accession Number:

NM_001400

GeneID (NCBI):

1901

UNIPROT ID:

P21453

Full Name:

sphingosine-1-phosphate receptor 1

Calculated MW:

43 kDa

Observed MW:

40-50 kDa

Purification Method:

Antigen affinity purification

Recommended Dilutions:

WB 1:1000-1:6000

IP 0.5-4.0 ug for 1.0-3.0 mg of total protein lysate

Applications

Tested Applications:

WB, IP, ELISA

Cited Applications:

WB, IHC, IF, IP

Species Specificity:

human, mouse, rat

Cited Species:

human, mouse, rat

Positive Controls:

WB : mouse brain tissue, rat brain tissue

IP : mouse brain tissue,

Background Information

S1PR1 (sphingosine-1-phosphate receptor 1), also known as S1P1 or EDG1, is one of five G-protein-coupled receptors for sphingosine-1-phosphate (S1P) (PMID: 18787560). S1P1 and its receptors have important regulatory functions in normal physiology and disease processes, particularly involving the immune, central nervous, and cardiovascular systems (PMID: 21339489). S1PR1 is widely expressed in various cell types, including endothelial cells and lymphocytes (PMID: 14737169). S1P-S1PR1 plays a major role in lymphocyte egress and chemotaxis, cell proliferation and survival, and tumor angiogenesis and metastasis (PMID: 21102457). The antibody is specific to S1PR1.

Notable Publications

Author	Pubmed ID	Journal	Application
Shuang Tong	24073762	Virol J	IHC
Ting Fang	33101013	Front Pharmacol	WB
Zhi Zheng	30476824	Int Immunopharmacol	WB

Storage

Storage:

Store at -20°C. Stable for one year after shipment.

Storage Buffer:

PBS with 0.02% sodium azide and 50% glycerol pH 7.3.

Aliquoting is unnecessary for -20°C storage

*** 20ul sizes contain 0.1% BSA

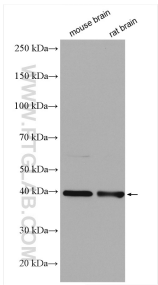
For technical support and original validation data for this product please contact:

T: 1 (888) 4PTGLAB (1-888-478-4522) (toll free in USA), or 1(312) 455-8498 (outside USA)

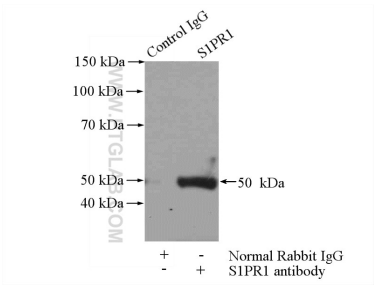
E: proteintech@ptglab.com
W: ptglab.com

This product is exclusively available under Proteintech Group brand and is not available to purchase from any other manufacturer.

Selected Validation Data



Various lysates were subjected to SDS PAGE followed by western blot with 55133-1-AP (S1PR1/EDG1 antibody) at dilution of 1:3000 incubated at room temperature for 1.5 hours.



IP result of anti-S1PR1/EDG1 (IP:55133-1-AP, 4ug; Detection:55133-1-AP 1:300) with mouse brain tissue lysate 2640ug.