

For Research Use Only

LTB4R Polyclonal antibody

Catalog Number: 55137-1-AP



Basic Information

Catalog Number:

55137-1-AP

Size:

150ul , Concentration: 650 ug/ml by Nanodrop and 587 ug/ml by Bradford method using BSA as the standard;

Source:

Rabbit

Isotype:

IgG

GenBank Accession Number:

NM_181657

GeneID (NCBI):

1241

UNIPROT ID:

Q15722

Full Name:

Leukotriene B4 receptor

Calculated MW:

38 kDa

Purification Method:

Antigen affinity purification

Recommended Dilutions:

IHC 1:20-1:200

Applications

Tested Applications:

IHC, ELISA

Species Specificity:

human

Positive Controls:

IHC : human heart tissue, human breast cancer tissue

Note-IHC: suggested antigen retrieval with TE buffer pH 9.0; (*) Alternatively, antigen retrieval may be performed with citrate buffer pH 6.0

Background Information

Leukotriene B4 receptor 1 (LTB4R, also known as LTB4R1 or BLTR) is a G-protein coupled receptor for Leukotriene B4, a potent chemoattractant that is primarily involved in inflammation, immune responses and host defence against infection (PMID: 9177352). LTB4R is highly expressed in human leukocytes and is involved in the regulation of the inflammatory system.

Storage

Storage:

Store at -20°C.

Storage Buffer:

PBS with 0.02% sodium azide and 50% glycerol pH 7.3.

Aliquoting is unnecessary for -20°C storage

*** 20ul sizes contain 0.1% BSA

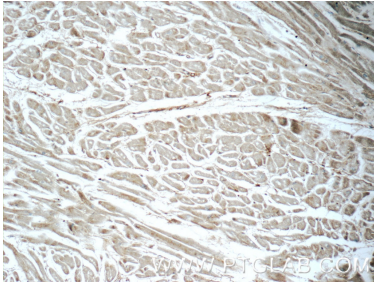
For technical support and original validation data for this product please contact:

T: 1 (888) 4PTGLAB (1-888-478-4522) (toll free in USA), or 1(312) 455-8498 (outside USA)

E: proteintech@ptglab.com
W: ptglab.com

This product is exclusively available under Proteintech Group brand and is not available to purchase from any other manufacturer.

Selected Validation Data



Immunohistochemical analysis of paraffin-embedded human heart tissue slide using 55137-1-AP (LTB4R Antibody) at dilution of 1:50 (under 10x lens).



Immunohistochemical analysis of paraffin-embedded human heart tissue slide using 55137-1-AP (LTB4R Antibody) at dilution of 1:50 (under 40x lens).