

For Research Use Only

PRKG2 Polyclonal antibody, PBS Only

Catalog Number: 55138-1-PBS

Featured Product



Basic Information

Catalog Number:

55138-1-PBS

Size:

100ug, Concentration: 1 mg/ml by Nanodrop;

Source:

Rabbit

Isotype:

IgG

GenBank Accession Number:

NM_006259

GeneID (NCBI):

5593

UNIPROT ID:

Q13237

Full Name:

protein kinase, cGMP-dependent, type II

Calculated MW:

87 kDa

Observed MW:

85-90 kDa

Purification Method:

Antigen affinity purification

Applications

Tested Applications:

WB, IHC, IF/ICC, IP, Indirect ELISA

Species Specificity:

human, mouse, rat

Background Information

PRKG2, also named as PRKGR2 and cGK2, belongs to the protein kinase superfamily, AGC Ser/Thr protein kinase family and cGMP subfamily. It catalyses the reaction: ATP + a protein = ADP + a phosphoprotein. The antibody is specific to PRKG2.

Storage

Storage:

Store at -80°C.

Storage Buffer:

PBS only, pH7.3

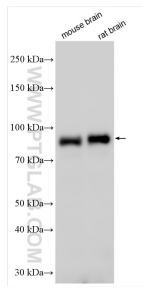
For technical support and original validation data for this product please contact:

T: 1 (888) 4PTGLAB (1-888-478-4522) (toll free in USA), or 1(312) 455-8498 (outside USA)

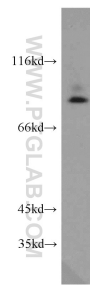
E: proteintech@ptglab.com
W: ptglab.com

This product is exclusively available under Proteintech Group brand and is not available to purchase from any other manufacturer.

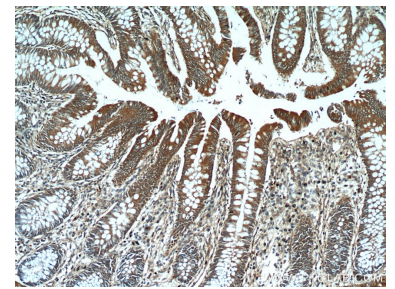
Selected Validation Data



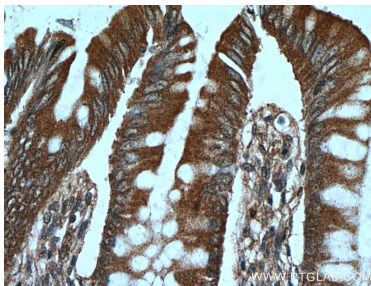
Various lysates were subjected to SDS PAGE followed by western blot with 55138-1-AP (PRKG2 antibody) at dilution of 1:1500 incubated at room temperature for 1.5 hours. This data was developed using the same antibody clone with 55138-1-PBS in a different storage buffer formulation.



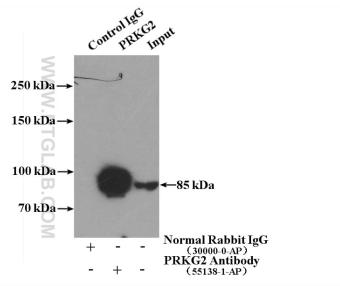
mouse brain tissue were subjected to SDS PAGE followed by western blot with 55138-1-AP (PRKG2 antibody) at dilution of 1:500 incubated at room temperature for 1.5 hours. This data was developed using the same antibody clone with 55138-1-PBS in a different storage buffer formulation.



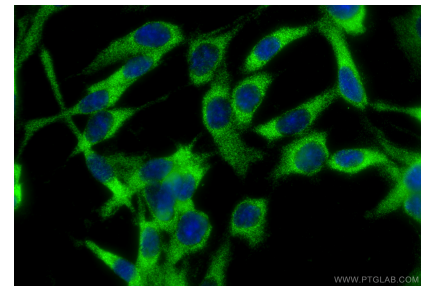
Immunohistochemical analysis of paraffin-embedded human colon using 55138-1-AP (PRKG2 antibody) at dilution of 1:50 (under 10x lens). This data was developed using the same antibody clone with 55138-1-PBS in a different storage buffer formulation.



Immunohistochemical analysis of paraffin-embedded human colon using 55138-1-AP (PRKG2 antibody) at dilution of 1:50 (under 40x lens). This data was developed using the same antibody clone with 55138-1-PBS in a different storage buffer formulation.



IP result of anti-PRKG2 (IP:55138-1-AP, 4ug; Detection:55138-1-AP 1:500) with mouse brain tissue lysate 4000ug. This data was developed using the same antibody clone with 55138-1-PBS in a different storage buffer formulation.



Immunofluorescent analysis of (-20°C Ethanol) fixed C6 cells using PRKG2 antibody (55138-1-AP) at dilution of 1:400 and CoraLite®488-Conjugated Goat Anti-Rabbit IgG(H+L) (SA00013-2). This data was developed using the same antibody clone with 55138-1-PBS in a different storage buffer formulation.