

For Research Use Only

# PPP3CB-specific Polyclonal antibody



Catalog Number: 55148-1-AP

Featured Product

4 Publications

## Basic Information

<b>Catalog Number:</b> 55148-1-AP	<b>GenBank Accession Number:</b> NM_021132	<b>Purification Method:</b> Antigen affinity purification
<b>Size:</b> 150ul, Concentration: 300 µg/ml by Nanodrop and 220 µg/ml by Bradford method using BSA as the standard;	<b>GeneID (NCBI):</b> 5532	<b>Recommended Dilutions:</b> WB 1:1000-1:6000 IP 0.5-4.0 ug for IP and 1:500-1:1000 for WB
<b>Source:</b> Rabbit	<b>Full Name:</b> protein phosphatase 3 (formerly 2B), catalytic subunit, beta isoform	<b>IHC 1:20-1:200</b> <b>IF 1:10-1:100</b>
<b>Isotype:</b> IgG	<b>Calculated MW:</b> 59 kDa	
	<b>Observed MW:</b> 59 kDa	

## Applications

### Tested Applications:

IF, IHC, IP, WB, ELISA

### Cited Applications:

IF, IHC, WB

### Species Specificity:

human, mouse, rat

### Cited Species:

human, rat, mouse

**Note-IHC: suggested antigen retrieval with TE buffer pH 9.0; (\*) Alternatively, antigen retrieval may be performed with citrate buffer pH 6.0**

### Positive Controls:

**WB:** NIH/3T3 cells, mouse brain tissue, fetal human brain tissue, rat brain tissue

**IP:** mouse brain tissue,

**IHC:** human heart tissue, mouse kidney tissue

**IF:** A431 cells,

## Background Information

PPP3CB is one of the three isoforms of the A subunit of calcineurin (CnA). Calcineurin is a calcium-dependent serine/threonine phosphatase. It consists of two subunits: subunit A (CnA) and subunit B (CnB). For CnA, three isoforms PPP3CA (CnA $\alpha$ ), PPP3CB (CnA $\beta$ ) and PPP3CC (CnA $\gamma$ ) have been identified. PPP3CB is a calcium-dependent, calmodulin-stimulated protein phosphatase. It may have a role in the calmodulin activation of calcineurin. This antibody is specific to PPP3CB.

## Notable Publications

Author	Pubmed ID	Journal	Application
Junnan Wu	26436650	J Clin Invest	WB,IHC,IF
Yue Zhao	28540409	J Mol Med (Berl)	WB,IHC
Yue Qin	35388181	Mol Psychiatry	WB

## Storage

### Storage:

Store at -20°C. Stable for one year after shipment.

### Storage Buffer:

PBS with 0.02% sodium azide and 50% glycerol pH 7.3.

Aliquoting is unnecessary for -20°C storage

\*\*\* 20ul sizes contain 0.1% BSA

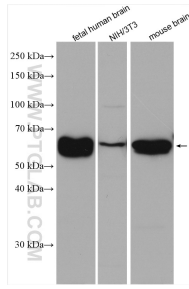
For technical support and original validation data for this product please contact:

T: 1 (888) 4PTGLAB (1-888-478-4522) (toll free in USA), or 1(312) 455-8498 (outside USA)

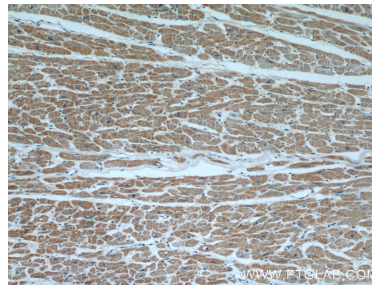
E: proteintech@ptglab.com  
W: ptglab.com

This product is exclusively available under Proteintech Group brand and is not available to purchase from any other manufacturer.

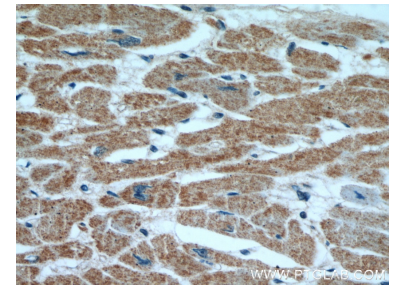
## Selected Validation Data



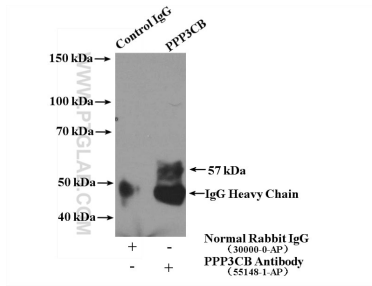
Various lysates were subjected to SDS PAGE followed by western blot with 55148-1-AP (PPP3CB-specific antibody) at dilution of 1:3000 incubated at room temperature for 1.5 hours.



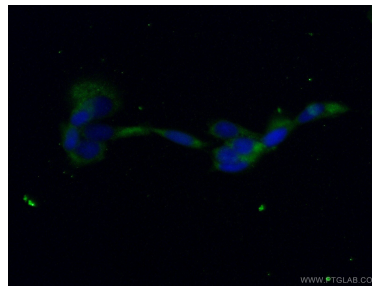
Immunohistochemical analysis of paraffin-embedded human heart using 55148-1-AP (PPP3CB-specific antibody) at dilution of 1:50 (under 10x lens).



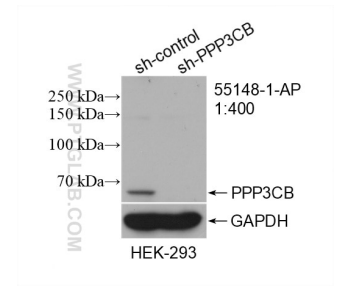
Immunohistochemical analysis of paraffin-embedded human heart using 55148-1-AP (PPP3CB-specific antibody) at dilution of 1:50 (under 40x lens).



IP Result of anti-PPP3CB-specific (IP:55148-1-AP, 4ug; Detection:55148-1-AP 1:500) with mouse brain tissue lysate 4000ug.



Immunofluorescent analysis of (-20°C Ethanol) fixed A431 cells using 55148-1-AP (PPP3CB-specific antibody) at dilution of 1:25 and Alexa Fluor 488-conjugated AffiniPure Goat Anti-Rabbit IgG(H+L).



WB result of PPP3CB-specific antibody (55148-1-AP; 1:400; incubated at room temperature for 1.5 hours) with sh-Control and sh-PPP3CB-specific transfected HEK-293 cells.