

For Research Use Only

CD42c Polyclonal antibody, PBS Only

Catalog Number: 55161-1-PBS



Basic Information

Catalog Number:

55161-1-PBS

Size:

100ug , Concentration: 1 mg/ml by Nanodrop;

Source:

Rabbit

Isotype:

IgG

GenBank Accession Number:

NM_000407

GeneID (NCBI):

2812

UNIPROT ID:

P13224

Full Name:

glycoprotein Ib (platelet), beta polypeptide

Calculated MW:

43 kDa

Observed MW:

26 kDa

Purification Method:

Antigen affinity purification

Applications

Tested Applications:

WB, Indirect ELISA

Species Specificity:

human

Background Information

CD42c, also known as platelet glycoprotein Ib beta chain (GP1BB), is a transmembrane protein containing a leucine-rich amino acid sequence (PMID: 3353370). CD42c is covalently linked to platelet glycoprotein Ib alpha chain (CD42b/GP1BA) to form GPIb, which is part of the Glycoprotein Ib-V-IX receptor (GPIb-V-IX) complex that constitutes the receptor for von Willebrand factor (VWF), and mediates platelet adhesion (PMID: 7660135). Mutations in the GP1BB gene have been associated with Bernard-Soulier syndrome, velocardiofacial syndrome, and giant platelet disorder.

Storage

Storage:

Store at -80°C.

Storage Buffer:

PBS Only

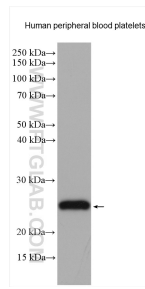
For technical support and original validation data for this product please contact:

T: 1 (888) 4PTGLAB (1-888-478-4522) (toll free in USA), or 1(312) 455-8498 (outside USA)

E: proteintech@ptglab.com
W: ptglab.com

This product is exclusively available under Proteintech Group brand and is not available to purchase from any other manufacturer.

Selected Validation Data



Human peripheral blood platelets were subjected to SDS PAGE followed by western blot with 55161-1-AP (CD42c antibody) at dilution of 1:4000 incubated at room temperature for 1.5 hours. This data was developed using the same antibody clone with 55161-1-PBS in a different storage buffer formulation.