

For Research Use Only

# PPP3CC-specific Polyclonal antibody



Catalog Number: 55163-1-AP

1 Publications

## Basic Information

<b>Catalog Number:</b> 55163-1-AP	<b>GenBank Accession Number:</b> NM_005605	<b>Purification Method:</b> Antigen affinity purification
<b>Size:</b> 150ul , Concentration: 600 µg/ml by Nanodrop and 200 µg/ml by Bradford method using BSA as the standard;	<b>GeneID (NCBI):</b> 5533	<b>Recommended Dilutions:</b> WB 1:500-1:2000 IF 1:50-1:500
<b>Source:</b> Rabbit	<b>Full Name:</b> protein phosphatase 3 (formerly 2B), catalytic subunit, gamma isoform	
<b>Isotype:</b> IgG	<b>Calculated MW:</b> 58 kDa	
	<b>Observed MW:</b> 58 kDa	

## Applications

<b>Tested Applications:</b> IF, WB, ELISA	<b>Positive Controls:</b> WB : fetal human brain tissue, human brain tissue, human testis tissue IF : U2OS cells,
<b>Cited Applications:</b> WB	
<b>Species Specificity:</b> human, mouse	
<b>Cited Species:</b> human	

## Background Information

PPP3CC, also named as CALNA3 and CNA3, belongs to the PPP phosphatase family and PP-2B subfamily. It is a calcium-dependent, calmodulin-stimulated protein phosphatase. It may have a role in the calmodulin activation of calcineurin. This antibody is specific to PPP3CC.

## Notable Publications

Author	Pubmed ID	Journal	Application
Hong Cao	35235867	Acta Biomater	WB

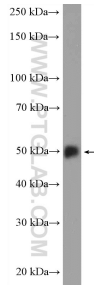
## Storage

**Storage:**  
Store at -20°C.  
**Storage Buffer:**  
PBS with 0.02% sodium azide and 50% glycerol pH 7.3.  
Aliquoting is unnecessary for -20°C storage

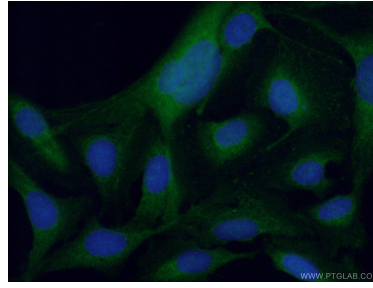
For technical support and original validation data for this product please contact:  
T: 1 (888) 4PTGLAB (1-888-478-4522) (toll free in USA), or 1(312) 455-8498 (outside USA)  
E: proteintech@ptglab.com  
W: ptglab.com

This product is exclusively available under Proteintech Group brand and is not available to purchase from any other manufacturer.

## Selected Validation Data



fetal human brain tissue were subjected to SDS PAGE followed by western blot with 55163-1-AP (PPP3CC-specific antibody at dilution of 1:1000 incubated at room temperature for 1.5 hours.



Immunofluorescent analysis of (4% PFA) fixed U2OS cells using 55163-1-AP (PPP3CC-specific antibody) at dilution of 1:50 and Alexa Fluor 488-conjugated AffiniPure Goat Anti-Rabbit IgG(H+L).