

For Research Use Only

STX1A Polyclonal antibody

Catalog Number: 55164-1-AP



Basic Information

Catalog Number:

55164-1-AP

Size:

150ul , Concentration: 350 ug/ml by Nanodrop;

Source:

Rabbit

Isotype:

IgG

GenBank Accession Number:

NM_004603

GeneID (NCBI):

6804

UNIPROT ID:

Q16623

Full Name:

syntaxin 1A (brain)

Calculated MW:

33 kDa

Observed MW:

35 kDa

Purification Method:

Antigen affinity purification

Recommended Dilutions:

WB 1:1000-1:6000

Applications

Tested Applications:

WB, ELISA

Species Specificity:

human

Positive Controls:

WB : human plasma,

Background Information

Syntaxins are a family of transmembrane proteins that belong to the SNARE complex (PMID: 11737951). In conjunction with other SNAREs and with the cytoplasmic NSF and SNAP proteins, syntaxins mediate vesicle fusion in diverse vesicular transport processes along the exocytic and endocytic pathways (PMID: 11737951). Syntaxin 1A (STX1A) and 1B (STX1B), two closely related isoforms of syntaxin 1, are involved in synaptic vesicle docking and fusion during neurotransmitter release (PMID: 7690687; 1321498; 18691641). Syntaxin 1A is associated with a variety of neurological diseases, including epilepsy, attention deficit hyperactivity disorder (ADHD), migraine, etc (PMID: 26918652; 25445064; 22250207). This antibody recognizes human STX1A.

Storage

Storage:

Store at -20°C. Stable for one year after shipment.

Storage Buffer:

PBS with 0.02% sodium azide and 50% glycerol pH 7.3.

Aliquoting is unnecessary for -20°C storage

*** 20ul sizes contain 0.1% BSA

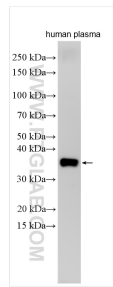
For technical support and original validation data for this product please contact:

T: 1 (888) 4PTGLAB (1-888-478-4522) (toll free in USA), or 1(312) 455-8498 (outside USA)

E: proteintech@ptglab.com
W: ptglab.com

This product is exclusively available under Proteintech Group brand and is not available to purchase from any other manufacturer.

Selected Validation Data



human plasma was subjected to SDS PAGE followed by western blot with 55164-1-AP (STX1A antibody) at dilution of 1:3000 incubated at room temperature for 1.5 hours.