

For Research Use Only

SMURF1 Polyclonal antibody, PBS Only

Catalog Number: 55175-1-PBS

Featured Product



Basic Information

Catalog Number:

55175-1-PBS

Size:

100ug, Concentration: 1 mg/ml by Nanodrop;

Source:

Rabbit

Isotype:

IgG

GenBank Accession Number:

NM_020429

GeneID (NCBI):

57154

UNIPROT ID:

Q9HCE7

Full Name:

SMAD specific E3 ubiquitin protein ligase 1

Calculated MW:

86 kDa

Observed MW:

90-100 kDa

Purification Method:

Antigen affinity purification

Applications

Tested Applications:

WB, IHC, IF-P, Indirect ELISA

Species Specificity:

human, mouse, rat

Background Information

SMURF1, also named as KIAA1625, is E3 ubiquitin-protein ligase which accepts ubiquitin from an E2 ubiquitin-conjugating enzyme in the form of a thioester and then directly transfers the ubiquitin to targeted substrates. SMURF1 interacts with receptor-regulated SMADs specific for the BMP pathway, SMAD1 and SMAD5, in order to trigger their ubiquitination and degradation and hence their inactivation. The antibody is specific to SMURF1. SMURF1 can be detected as 90-100 kDa when ubiquitinated (PMID:17576816, PMID:20484049).

Storage

Storage:

Store at -80°C.

Storage Buffer:

PBS only, pH7.3

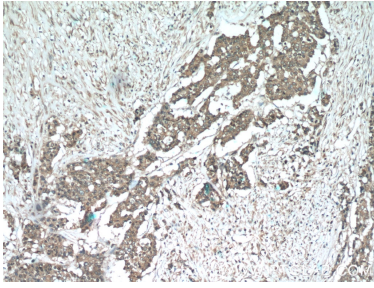
For technical support and original validation data for this product please contact:

T: 1 (888) 4PTGLAB (1-888-478-4522) (toll free in USA), or 1(312) 455-8498 (outside USA)

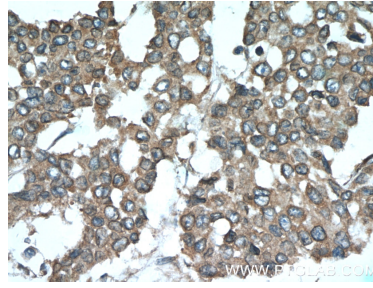
E: proteintech@ptglab.com
W: ptglab.com

This product is exclusively available under Proteintech Group brand and is not available to purchase from any other manufacturer.

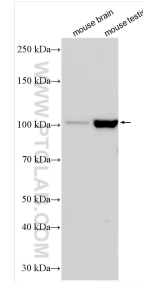
Selected Validation Data



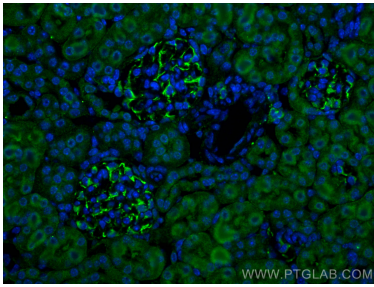
Immunohistochemical analysis of paraffin-embedded human colon cancer tissue slide using 55175-1-AP (SMURF1 Antibody) at dilution of 1:50 (under 10x lens). This data was developed using the same antibody clone with 55175-1-PBS in a different storage buffer formulation.



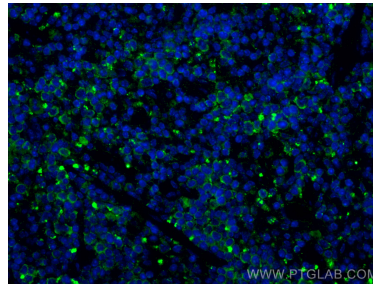
Immunohistochemical analysis of paraffin-embedded human colon cancer tissue slide using 55175-1-AP (SMURF1 Antibody) at dilution of 1:50 (under 40x lens). This data was developed using the same antibody clone with 55175-1-PBS in a different storage buffer formulation.



Various lysates were subjected to SDS PAGE followed by western blot with 55175-1-AP (SMURF1 antibody) at dilution of 1:2000 incubated at room temperature for 1.5 hours. This data was developed using the same antibody clone with 55175-1-PBS in a different storage buffer formulation.



Immunofluorescent analysis of (4% PFA) fixed paraffin-embedded mouse kidney tissue using SMURF1 antibody (55175-1-AP) at dilution of 1:200 and CoraLite@488-Conjugated AffiniPure Goat Anti-Rabbit IgG(H+L) (SA00013-2). Heat mediated antigen retrieval with Tris-EDTA buffer (pH 9.0). This data was developed using the same antibody clone with 55175-1-PBS in a different storage buffer formulation.



Immunofluorescent analysis of (4% PFA) fixed paraffin-embedded mouse spleen tissue using SMURF1 antibody (55175-1-AP) at dilution of 1:200 and CoraLite@488-Conjugated AffiniPure Goat Anti-Rabbit IgG(H+L) (SA00013-2). Heat mediated antigen retrieval with Tris-EDTA buffer (pH 9.0). This data was developed using the same antibody clone with 55175-1-PBS in a different storage buffer formulation.