

For Research Use Only

SLCO2B1 Polyclonal antibody

Catalog Number: 55180-1-AP



Basic Information

Catalog Number: 55180-1-AP	GenBank Accession Number: NM_007256	Purification Method: Antigen affinity purification
Size: 150ul , Concentration: 450 µg/ml by Nanodrop;	GeneID (NCBI): 11309	Recommended Dilutions: WB 1:500-1:2000 IHC 1:50-1:500 IF 1:50-1:500
Source: Rabbit	Full Name: solute carrier organic anion transporter family, member 2B1	
Isotype: IgG	Calculated MW: 77 kDa	
	Observed MW: 61 kDa	

Applications

Tested Applications: IF, IHC, WB, ELISA	Positive Controls: WB : MCF-7 cells, IHC : human liver tissue, IF : HepG2 cells,
Species Specificity: human, mouse	
Note-IHC: suggested antigen retrieval with TE buffer pH 9.0; (*) Alternatively, antigen retrieval may be performed with citrate buffer pH 6.0	

Background Information

Solute carrier organic anion (SLCO) gene families encode organic anion transport proteins (OATP), which are membrane transporters widely expressed in the human body that influx numerous compounds and drugs including androgens. SLCO2B1 is a member of an organic anion transporter family and has previously been shown to transport a multitude of drugs and steroid hormone conjugates (PMID: 35714613). High expression of SLCO2B1 is known to associate with the resistance to androgen deprivation therapy in prostate cancer (PMID: 29581838).

Storage

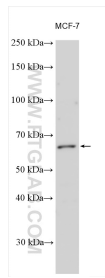
Storage:
Store at -20°C. Stable for one year after shipment.
Storage Buffer:
PBS with 0.02% sodium azide and 50% glycerol pH 7.3.
Aliquoting is unnecessary for -20°C storage

*** 20ul sizes contain 0.1% BSA

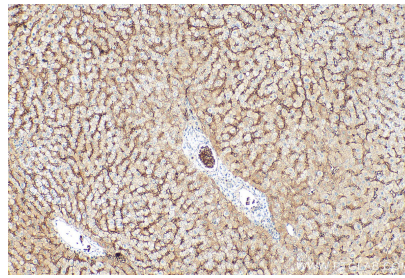
For technical support and original validation data for this product please contact:
T: 1 (888) 4PTGLAB (1-888-478-4522) (toll free in USA), or 1(312) 455-8498 (outside USA) E: proteintech@ptglab.com W: ptglab.com

This product is exclusively available under Proteintech Group brand and is not available to purchase from any other manufacturer.

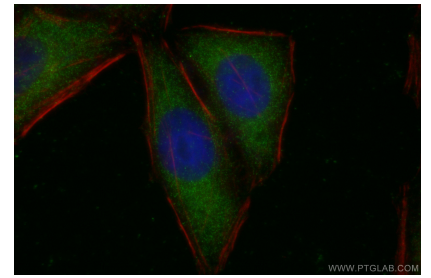
Selected Validation Data



Various lysates were subjected to SDS PAGE followed by western blot with 55180-1-AP (SLCO2B1 antibody) at dilution of 1:1000 incubated at room temperature for 1.5 hours.



Immunohistochemical analysis of paraffin-embedded human liver tissue slide using 55180-1-AP (SLCO2B1 antibody) at dilution of 1:200 (under 10x lens). Heat mediated antigen retrieval with Tris-EDTA buffer (pH 9.0).



Immunofluorescent analysis of (-20°C Ethanol) fixed HepG2 cells using SLCO2B1 antibody (55180-1-AP) at dilution of 1:200 and CoraLite®488-Conjugated AffiniPure Goat Anti-Rabbit IgG(H+L), CL594-phalloidin (red).