

For Research Use Only

PDE6C Polyclonal antibody

Catalog Number: 55183-1-AP



Basic Information

Catalog Number: 55183-1-AP	GenBank Accession Number: NM_006204	Purification Method: Antigen affinity purification
Size: 150ul , Concentration: 200 µg/ml by Nanodrop and 133 µg/ml by Bradford method using BSA as the standard;	GeneID (NCBI): 5146	Recommended Dilutions: WB 1:200-1:1000
Source: Rabbit	Full Name: phosphodiesterase 6C, cGMP-specific, cone, alpha prime	
Isotype: IgG	Calculated MW: 99 kDa	
	Observed MW: 52 kDa, 99 kDa	

Applications

Tested Applications: WB, ELISA	Positive Controls: WB : Y79 cells,
Species Specificity: human	

Background Information

PDE6C, also named as PDEA2, belongs to the cyclic nucleotide phosphodiesterase family. It catalyze the reaction: Guanosine 3',5'-cyclic phosphate + H₂O = guanosine 5'-phosphate. Defects in PDE6C are the cause of cone dystrophy type 4 (COD4). Mutations in the PDE6C gene encoding the catalytic subunit of the cone photoreceptor phosphodiesterase as a cause of autosomal recessive achromatopsia.(PMID:19887631) This antibody is specific to PDE6C.

Storage

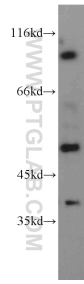
Storage:
Store at -20°C.
Storage Buffer:
PBS with 0.02% sodium azide and 50% glycerol pH 7.3.
Aliquoting is unnecessary for -20°C storage

*** 20ul sizes contain 0.1% BSA

For technical support and original validation data for this product please contact:
T: 1 (888) 4PTGLAB (1-888-478-4522) (toll free in USA), or 1(312) 455-8498 (outside USA) E: proteintech@ptglab.com W: ptglab.com

This product is exclusively available under Proteintech Group brand and is not available to purchase from any other manufacturer.

Selected Validation Data



Y79 cells were subjected to SDS PAGE followed by western blot with 55183-1-AP (PDE6C antibody) at dilution of 1:200 incubated at room temperature for 1.5 hours.