

For Research Use Only

DARC Polyclonal antibody

Catalog Number: 55185-1-AP **1 Publications**



Basic Information

Catalog Number: 55185-1-AP	GenBank Accession Number: NM_002036	Purification Method: Antigen affinity purification
Size: 150ul , Concentration: 350 µg/ml by Nanodrop and 233 µg/ml by Bradford method using BSA as the standard;	GeneID (NCBI): 2532	Recommended Dilutions: WB 1:200-1:1000 IHC 1:20-1:200
Source: Rabbit	UNIPROT ID: Q16570	
Isotype: IgG	Full Name: Duffy blood group, chemokine receptor	
	Calculated MW: 36 kDa	
	Observed MW: 33-35 kDa	

Applications

Tested Applications: IHC, WB, ELISA	Positive Controls: WB : K-562 cells, IHC : human kidney tissue,
Cited Applications: WB, IF	
Species Specificity: human	
Cited Species: human, mouse	
Note-IHC: suggested antigen retrieval with TE buffer pH 9.0; (*) Alternatively, antigen retrieval may be performed with citrate buffer pH 6.0	

Background Information

CD234, also named as DARC, Duffy, FY and GPD, belongs to the G-protein coupled receptor Duffy family. It is a non-specific receptor for many chemokines such as IL-8, GRO, RANTES, MCP-1 and TARC. It is also the receptor for the human malaria parasites Plasmodium vivax and Plasmodium knowlesi. This antibody is specific to CD234.

Notable Publications

Author	Pubmed ID	Journal	Application
Xueling Zhang	38290663	Ocul Surf	WB, IF

Storage

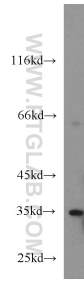
Storage:
Store at -20°C.
Storage Buffer:
PBS with 0.02% sodium azide and 50% glycerol pH 7.3.
Aliquoting is unnecessary for -20°C storage

*** 20ul sizes contain 0.1% BSA

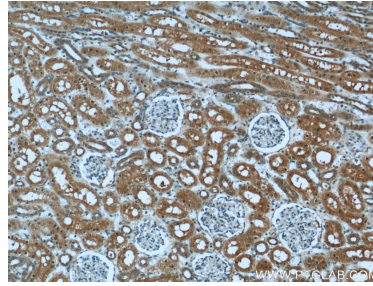
For technical support and original validation data for this product please contact:
T: 1 (888) 4PTGLAB (1-888-478-4522) (toll free in USA), or 1(312) 455-8498 (outside USA)
E: proteintech@ptglab.com
W: ptglab.com

This product is exclusively available under Proteintech Group brand and is not available to purchase from any other manufacturer.

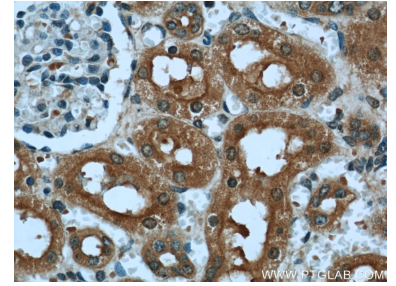
Selected Validation Data



K-562 cells were subjected to SDS PAGE followed by western blot with 55185-1-AP (DARC antibody) at dilution of 1:500 incubated at room temperature for 1.5 hours.



Immunohistochemical analysis of paraffin-embedded human kidney using 55185-1-AP (DARC antibody) at dilution of 1:50 (under 10x lens).



Immunohistochemical analysis of paraffin-embedded human kidney using 55185-1-AP (DARC antibody) at dilution of 1:50 (under 40x lens).