

For Research Use Only

SET/TAF-I Polyclonal antibody

Catalog Number: 55201-1-AP

Featured Product

15 Publications



Basic Information

Catalog Number:

55201-1-AP

Size:

150ul, Concentration: 600 ug/ml by Nanodrop and 273 ug/ml by Bradford method using BSA as the standard;

Source:

Rabbit

Isotype:

IgG

GenBank Accession Number:

NM_003011

GeneID (NCBI):

6418

UNIPROT ID:

Q01105

Full Name:

SET nuclear oncogene

Calculated MW:

33 kDa

Observed MW:

41 kDa, 39 kDa

Purification Method:

Antigen affinity purification

Recommended Dilutions:

WB 1:500-1:2000

IHC 1:50-1:500

Applications

Tested Applications:

WB, IHC, ELISA

Cited Applications:

WB, IHC, IF

Species Specificity:

human, mouse

Cited Species:

human

Positive Controls:

WB: HEK-293T cells, HeLa cells, HepG2 cells, Jurkat cells, NIH/3T3 cells

IHC: mouse spleen tissue, human kidney tissue, human liver cancer tissue, human gliomas tissue

Note-IHC: suggested antigen retrieval with TE buffer pH 9.0; (*) Alternatively, antigen retrieval may be performed with citrate buffer pH 6.0

Background Information

SET, also named as IGAAD, I-2PP2A, TAF-I, IGAAD and PHAPII, belongs to the nucleosome assembly protein (NAP) family. SET is a multifunctional oncoprotein which is ubiquitously expressed in all kinds of cells. The SET protein participates in many cellular processes including cell cycle, cell migration, apoptosis, transcription, and DNA repair. The SET protein plays important roles in facilitating cell growth and proliferation via many pathways that promote tumorigenesis and metastasis. The SET protein shows apparent molecular masses of 41 and 39 kDa (PMID: 12759364, PMID: 7753797).

Notable Publications

Author	Pubmed ID	Journal	Application
Hongli Pan	34774019	BMC Cancer	WB, IHC
Hao Liu	25945834	Oncotarget	WB
Xiaoning Yuan	28677734	Oncol Rep	

Storage

Storage:

Store at -20°C. Stable for one year after shipment.

Storage Buffer:

PBS with 0.02% sodium azide and 50% glycerol pH 7.3.

Aliquoting is unnecessary for -20°C storage

*** 20ul sizes contain 0.1% BSA

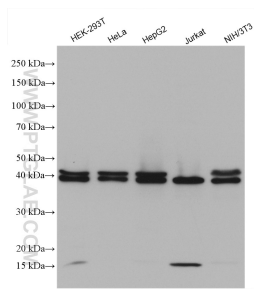
For technical support and original validation data for this product please contact:

T: 1 (888) 4PTGLAB (1-888-478-4522) (toll free in USA), or 1(312) 455-8498 (outside USA)

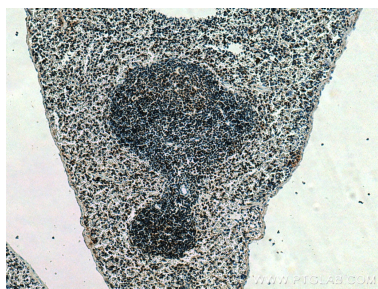
E: proteintech@ptglab.com
W: ptglab.com

This product is exclusively available under Proteintech Group brand and is not available to purchase from any other manufacturer.

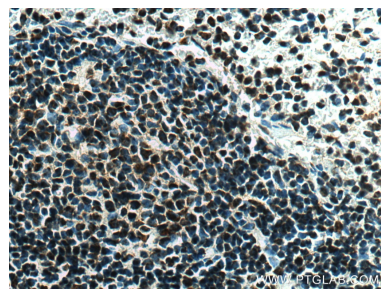
Selected Validation Data



Various lysates were subjected to SDS PAGE followed by western blot with 55201-1-AP (SET/TAF-I antibody) at dilution of 1:1000 incubated at room temperature for 1.5 hours.



Immunohistochemical analysis of paraffin-embedded mouse spleen tissue slide using 55201-1-AP (SET/TAF-I antibody) at dilution of 1:200 (under 10x lens). Heat mediated antigen retrieval with Tris-EDTA buffer (pH 9.0).



Immunohistochemical analysis of paraffin-embedded mouse spleen tissue slide using 55201-1-AP (SET/TAF-I antibody) at dilution of 1:200 (under 40x lens). Heat mediated antigen retrieval with Tris-EDTA buffer (pH 9.0).