

For Research Use Only

PLS3 Polyclonal antibody

Catalog Number: 55216-1-AP

Featured Product

4 Publications



Basic Information

Catalog Number:

55216-1-AP

Size:

150ul, Concentration: 800 µg/ml by Nanodrop and 460 µg/ml by Bradford method using BSA as the standard;

Source:

Rabbit

Isotype:

IgG

GenBank Accession Number:

NM_005032

GeneID (NCBI):

5358

UNIPROT ID:

P13797

Full Name:

plastin 3 (T isoform)

Calculated MW:

71 kDa

Observed MW:

63 kDa, 38 kDa

Purification Method:

Antigen affinity purification

Recommended Dilutions:

WB 1:500-1:1000

IHC 1:20-1:200

Applications

Tested Applications:

WB, IHC, ELISA

Cited Applications:

WB, IHC

Species Specificity:

human, mouse, rat

Cited Species:

human, mouse

Positive Controls:

WB : HepG2 cells, COLO 320 cells, HeLa cells

IHC : human oesophagus tissue, human skeletal muscle tissue

Note-IHC: suggested antigen retrieval with TE buffer pH 9.0; (*) Alternatively, antigen retrieval may be performed with citrate buffer pH 6.0

Background Information

PLS3, also named as T-plastin and Plastin-3, is an actin-bundling protein found in intestinal microvilli, hair cell stereocilia, and fibroblast filopodia. It plays an important role in leukocyte function. Both T- and L-plastin are implicated in several diseases, L-plastin is considered to be a valuable marker for cancer. (PMID: 15960882) This antibody is specific to PLS3

Notable Publications

Author	Pubmed ID	Journal	Application
Hye Kyeong Kwon	30048702	Biochim Biophys Acta	WB
Zechang Xin	32239705	J Cell Physiol	WB, IHC
Dongtao Wang	37347555	Environ Toxicol	WB, IHC

Storage

Storage:

Store at -20°C. Stable for one year after shipment.

Storage Buffer:

PBS with 0.02% sodium azide and 50% glycerol pH 7.3.

Aliquoting is unnecessary for -20°C storage

*** 20ul sizes contain 0.1% BSA

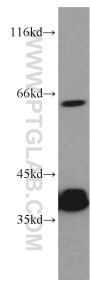
For technical support and original validation data for this product please contact:

T: 1 (888) 4PTGLAB (1-888-478-4522) (toll free in USA), or 1(312) 455-8498 (outside USA)

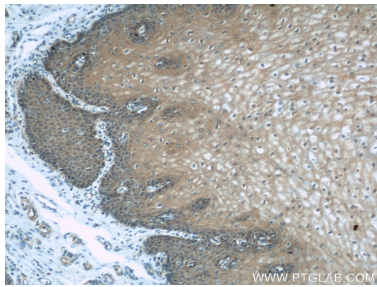
E: proteintech@ptglab.com
W: ptglab.com

This product is exclusively available under Proteintech Group brand and is not available to purchase from any other manufacturer.

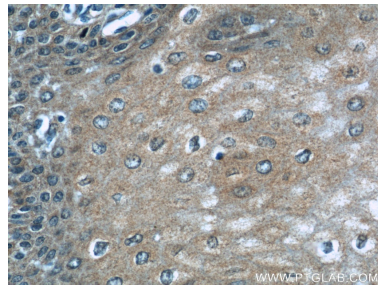
Selected Validation Data



HepG2 cells were subjected to SDS PAGE followed by western blot with 55216-1-AP (PLS3 antibody) at dilution of 1:500 incubated at room temperature for 1.5 hours.



Immunohistochemical analysis of paraffin-embedded human oesophagus using 55216-1-AP (PLS3 antibody) at dilution of 1:50 (under 10x lens).



Immunohistochemical analysis of paraffin-embedded human oesophagus using 55216-1-AP (PLS3 antibody) at dilution of 1:50 (under 40x lens).