

For Research Use Only

C4-B Alpha Chain/C4b-B/C4d-B Polyclonal antibody

Catalog Number: 55228-1-AP



Basic Information

Catalog Number:

55228-1-AP

Size:

150ul, Concentration: 1000 ug/ml by Nanodrop and 400 ug/ml by Bradford method using BSA as the standard;

Source:

Rabbit

Isotype:

IgG

GenBank Accession Number:

NM_000592

GeneID (NCBI):

721

UNIPROT ID:

POC0L5

Full Name:

complement component 4B (Chido blood group)

Calculated MW:

193 kDa

Observed MW:

95 kDa, 300 kDa

Purification Method:

Antigen affinity purification

Recommended Dilutions:

WB 1:1000-1:4000

Applications

Tested Applications:

WB, ELISA

Species Specificity:

human

Positive Controls:

WB : human blood,

Background Information

Complement C4, a component of the classical complement pathway, has an important role in innate immune function. C4 protein is expressed as a single chain precursor which is proteolytically cleaved into a trimer of alpha, beta, and gamma chains (molecular weights 95, 78, and 31 kDa) prior to secretion. The alpha chain is cleaved to release C4 anaphylatoxin, an antimicrobial peptide and a mediator of local inflammation. This antibody raised against 1116-1128aa of human C4-B protein can recognize C4-B precursor, C4-B alpha chain, C4b-B, and C4d-B.

Storage

Storage:

Store at -20°C.

Storage Buffer:

PBS with 0.02% sodium azide and 50% glycerol pH 7.3.

Aliquoting is unnecessary for -20°C storage

*** 20ul sizes contain 0.1% BSA

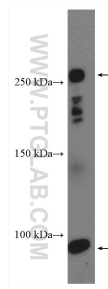
For technical support and original validation data for this product please contact:

T: 1 (888) 4PTGLAB (1-888-478-4522) (toll free in USA), or 1(312) 455-8498 (outside USA)

E: proteintech@ptglab.com
W: ptglab.com

This product is exclusively available under Proteintech Group brand and is not available to purchase from any other manufacturer.

Selected Validation Data



human blood were subjected to SDS PAGE followed by western blot with 55228-1-AP (C4-B alpha chain/C4b-B/C4d-B antibody) at dilution of 1:2000 incubated at room temperature for 1.5 hours.