

For Research Use Only

ENO3-specific Polyclonal antibody

Catalog Number: 55234-1-AP

Featured Product

4 Publications



Basic Information

Catalog Number: 55234-1-AP	GenBank Accession Number: NM_001976	Purification Method: Antigen affinity purification
Size: 150ul , Concentration: 900 µg/ml by Nanodrop and 760 µg/ml by Bradford method using BSA as the standard;	GeneID (NCBI): 2027	Recommended Dilutions: WB 1:2000-1:10000 IHC 1:250-1:1000 IF 1:50-1:500
Source: Rabbit	Full Name: enolase 3 (beta, muscle)	
Isotype: IgG	Calculated MW: 47 kDa	
	Observed MW: 42-47 kDa	

Applications

Tested Applications: IF, IHC, WB, ELISA	Positive Controls: WB : HeLa cells, SH-SY5Y cells, HepG2 cells, mouse brain tissue, Jurkat cells
Cited Applications: IHC, WB	IHC : mouse skeletal muscle tissue, human heart tissue, human skeletal muscle tissue
Species Specificity: human, mouse	IF : HeLa cells,
Cited Species: human, bovine	

Note-IHC: suggested antigen retrieval with TE buffer pH 9.0; (*) Alternatively, antigen retrieval may be performed with citrate buffer pH 6.0

Background Information

ENO3, also named as MSE, belongs to the enolase family. It appears to have a function in striated muscle development and regeneration. Defects in ENO3 are the cause of glycogen storage disease type 13 (GSD13). This antibody is specific to ENO3. It has no cross reaction to ENO1 and ENO2.

Notable Publications

Author	Pubmed ID	Journal	Application
Turner H Swartz	34153542	J Proteomics	WB
M D Xi	29352487	Reprod Domest Anim	WB
Jingyu Chen	35477821	Med Oncol	WB,IHC

Storage

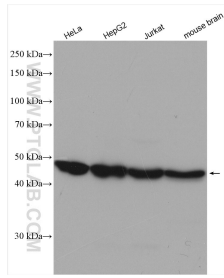
Storage:
Store at -20°C. Stable for one year after shipment.
Storage Buffer:
PBS with 0.02% sodium azide and 50% glycerol pH 7.3.
Aliquoting is unnecessary for -20°C storage

*** 20ul sizes contain 0.1% BSA

For technical support and original validation data for this product please contact:
T: 1 (888) 4PTGLAB (1-888-478-4522) (toll free in USA), or 1(312) 455-8498 (outside USA)
E: proteintech@ptglab.com
W: ptglab.com

This product is exclusively available under Proteintech Group brand and is not available to purchase from any other manufacturer.

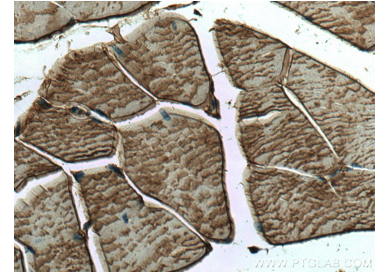
Selected Validation Data



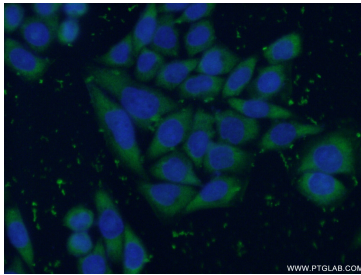
Various lysates were subjected to SDS PAGE followed by western blot with 55234-1-AP (ENO3-specific antibody) at dilution of 1:2000 incubated at room temperature for 1.5 hours.



Immunohistochemical analysis of paraffin-embedded mouse skeletal muscle tissue slide using 55234-1-AP (ENO3-specific antibody) at dilution of 1:500 (under 10x lens). Heat mediated antigen retrieval with Tris-EDTA buffer (pH 9.0).



Immunohistochemical analysis of paraffin-embedded mouse skeletal muscle tissue slide using 55234-1-AP (ENO3-specific antibody) at dilution of 1:500 (under 40x lens). Heat mediated antigen retrieval with Tris-EDTA buffer (pH 9.0).



Immunofluorescent analysis of (-20°C Ethanol) fixed HeLa cells using 55234-1-AP (ENO3-specific antibody) at dilution of 1:50 and Alexa Fluor 488-conjugated AffiniPure Goat Anti-Rabbit IgG(H+L).