

For Research Use Only

NSE/ENO2-specific Polyclonal antibody

Catalog Number: 55235-1-AP

Featured Product

1 Publications



Basic Information

Catalog Number:

55235-1-AP

Size:

150ul, Concentration: 133 ug/ml by Bradford method using BSA as the standard;

Source:

Rabbit

Isotype:

IgG

GenBank Accession Number:

NM_001975

GeneID (NCBI):

2026

UNIPROT ID:

P09104

Full Name:

enolase 2 (gamma, neuronal)

Calculated MW:

47 kDa

Observed MW:

47 kDa

Purification Method:

Antigen affinity purification

Recommended Dilutions:

WB 1:1000-1:4000

IHC 1:20-1:200

Applications

Tested Applications:

WB, IHC, ELISA

Cited Applications:

WB

Species Specificity:

human, mouse, rat

Cited Species:

mouse

Positive Controls:

WB : SH-SY5Y cells, mouse brain tissue, HEK-293 cells, HepG2 cells, U-251 cells

IHC : human brain tissue, human stomach cancer tissue

Note-IHC: suggested antigen retrieval with TE buffer pH 9.0; (*) Alternatively, antigen retrieval may be performed with citrate buffer pH 6.0

Background Information

NSE, also named as ENO2, belongs to the enolase family. Enolases are cytoplasmic glycolytic enzymes that may be involved in differentiation. The enolase has three isoenzymes, alpha, beta and gamma. The alpha form is expressed in most tissues, whereas the beta form is expressed in muscle tissue. The gamma enolase (ENO2), a homodimer, is primarily localized in neurons and neuroendocrine cells and is a cancer diagnostic marker for brain tumors (PMID:7520111). ENO2 plays a role in the glycolysis-related energy pathway and might be involved in higher metabolic activity during the day than at night, at least in part. This antibody is specific to ENO2 and has no cross reaction to ENO1 and ENO3.

Notable Publications

Author	Pubmed ID	Journal	Application
Chunli Xu	31257504	Mol Med Rep	WB

Storage

Storage:

Store at -20°C.

Storage Buffer:

PBS with 0.02% sodium azide and 50% glycerol pH 7.3.

Aliquoting is unnecessary for -20°C storage

*** 20ul sizes contain 0.1% BSA

For technical support and original validation data for this product please contact:

T: 1 (888) 4PTGLAB (1-888-478-4522) (toll free in USA), or 1(312) 455-8498 (outside USA)

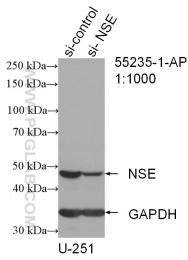
E: proteintech@ptglab.com
W: ptglab.com

This product is exclusively available under Proteintech Group brand and is not available to purchase from any other manufacturer.

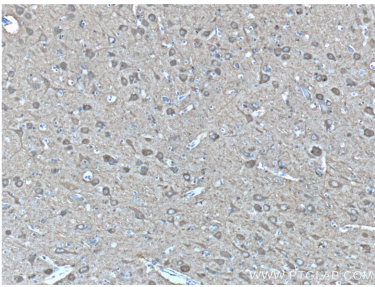
Selected Validation Data



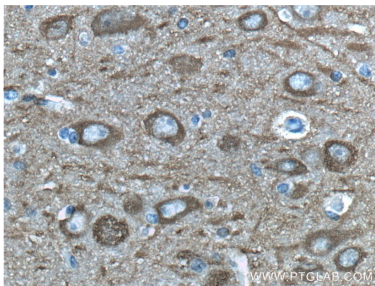
SH-SY5Y cells were subjected to SDS PAGE followed by western blot with 55235-1-AP (NSE/ENO2-specific antibody) at dilution of 1:2000 incubated at room temperature for 1.5 hours.



WB result of NSE/ENO2-specific antibody (55235-1-AP; 1:1000; incubated at room temperature for 1.5 hours) with sh-Control and sh-NSE/ENO2-specific transfected U-251 cells.



Immunohistochemical analysis of paraffin-embedded human brain tissue slide using 55235-1-AP (NSE/ENO2-specific antibody at dilution of 1:200 (under 10x lens).



Immunohistochemical analysis of paraffin-embedded human brain tissue slide using 55235-1-AP (NSE/ENO2-specific antibody at dilution of 1:200 (under 40x lens).