

For Research Use Only

Placental lactogen Polyclonal antibody, PBS Only

Catalog Number: 55236-1-PBS



Basic Information

Catalog Number:

55236-1-PBS

Size:

100ug , Concentration: 1 mg/ml by
Nanodrop;

Source:

Rabbit

Isotype:

IgG

GenBank Accession Number:

NM_001317

GeneID (NCBI):

1442

UNIPROT ID:

PODML3

Full Name:

chorionic somatomammotropin
hormone 1 (placental lactogen)

Calculated MW:

25 kDa

Observed MW:

23-25 kDa

Purification Method:

Antigen affinity purification

Applications

Tested Applications:

WB, IHC, Indirect ELISA

Species Specificity:

human

Background Information

CSH1, also named as PL, CSH2 and Lactogen, belongs to the somatotropin/prolactin family. CSH1 produced only during pregnancy and is involved in stimulating lactation, fetal growth and metabolism. It does not interact with GHR but only activates PRLR through zinc-induced dimerization(PubMed: 2744760). This antibody is specific to CSH1.

Storage

Storage:

Store at -80°C.

Storage Buffer:

PBS Only

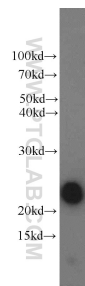
For technical support and original validation data for this product please contact:

T: 1 (888) 4PTGLAB (1-888-478-4522) (toll free
in USA), or 1(312) 455-8498 (outside USA)

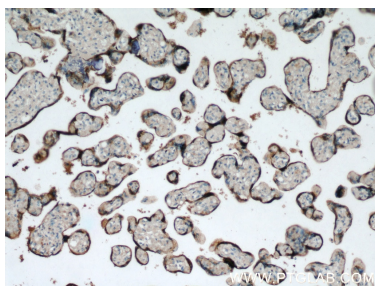
E: proteintech@ptglab.com
W: ptglab.com

This product is exclusively available under Proteintech Group brand and is not available to purchase from any other manufacturer.

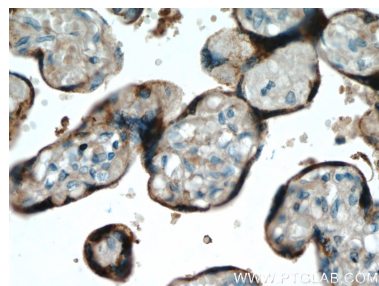
Selected Validation Data



human placenta tissue were subjected to SDS PAGE followed by western blot with 55236-1-AP (Placental lactogen antibody) at dilution of 1:800 incubated at room temperature for 1.5 hours. This data was developed using the same antibody clone with 55236-1-PBS in a different storage buffer formulation.



Immunohistochemical analysis of paraffin-embedded human placenta using 55236-1-AP (Placental lactogen antibody) at dilution of 1:50 (under 10x lens). This data was developed using the same antibody clone with 55236-1-PBS in a different storage buffer formulation.



Immunohistochemical analysis of paraffin-embedded human placenta using 55236-1-AP (Placental lactogen antibody) at dilution of 1:50 (under 40x lens). This data was developed using the same antibody clone with 55236-1-PBS in a different storage buffer formulation.